

Bee City USA - Lookout Mountain, GA

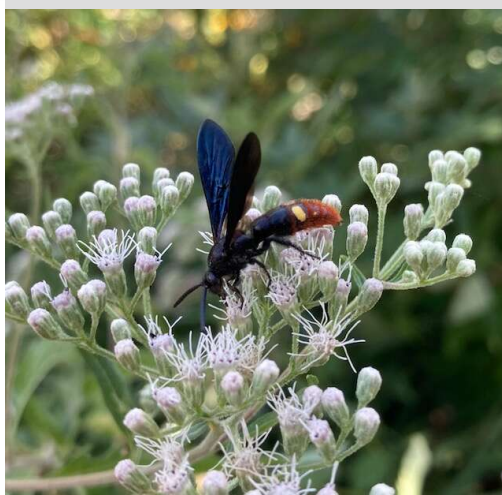
Report on 2021

Pollinator Habitat Creation & Enhancement

Talks to local groups including children about pollinators and native plant gardening. Hosted the presidents of various garden clubs on Lookout Mountain to promote Bee City USA mission, the planting of public places with native plants, and pesticide-free planting zones. Attended 6 committee meetings for the development of Fairy Trail Garden. Provided plant lists, including Butterfly and Moth host plants for Fairy Trail Garden and Fairyland School. Donated books, posters and other materials to Fairyland Elementary School library and classroom on pollinators. Set up a Native bee house in the pollinator garden for students to observe bees that nest in cavities. Provided seeds for students to participate in The Great Sunflower Project.



Promoting pollinators at Reflection Riding's native plant sale.



All insects welcome at Bee City sites-Blue-winged Wasp (*Scolia dubia*) on Boneset.



Helianthus silphioides, commonly called rosinweed sunflower or Ozark sunflower, blooming in June-August.

Education & Outreach

All seemed quiet and shut down during the Pandemic, but behind the scenes, public and school gardens were expanded during 2020-21 adding over 1 acre of pollinator habitat on Lookout Mountain, GA New Fairy Trail Garden Is A Wildlife Haven For People And Pollinators located on Whitt Road across from the Carter Soccer Field in Lookout Mountain, Ga. Fairy Trail Garden is an inviting pollinator and wildlife haven that beckons to each of us to slow down, look deeply into the natural world around us and let nature work her magic. A meandering woodland trail, peaceful seating, and an airy garden



of native sun, shade, meadow, and woodland perennials draw residents in for a visit. The garden was created to nurture, heal, and support our Lookout Mountain ecosystem of birds, bees, butterflies, bats, beetles, toads, turtles, owls, foxes and more. It also honors the unique natural wonders of the community by inspiring the use of less lawn, less water, fewer chemicals, and more native plantings that bring harmony to nature's wildlife both above and below the ground. Butterfly host plants have been added so butterflies can complete their life cycle. A rustic arbor at the back of the garden leads to Fairyland School and has been named "The Jimmy Campbell Connector Trail." Over 150 trees and shrubs were planted in November of 2020 and over 2,750 perennials were planted in May and June of 2021. Planning for the garden began during the pandemic in 2020 after the city received an \$85,000 grant from the Riverview Foundation. Mr. Campbell and City Manager Kenny Lee then formed a planning committee made up of representatives from local garden clubs and the local Bee City USA committee chairs. Denise Taylor and Lulu Brock from The Garden Club of Lookout Mountain donated \$5,000 for the purchase of perennials. Penny Simmons from the Lookout Mountain Beautiful Garden Club donated 1,000 bulbs to be planted this fall. Laurelwood Garden Club donated \$100 towards the development of the garden. Ann Brown and Candace Wells, Lookout Mountain Beautiful Garden Club members and Bee City USA Co-Chairs, supplied a list of native plants indigenous to the Cumberland Plateau. The garden was created using Bee City USA guidelines, "Thinking globally and acting locally, Bee City USA provides a framework for communities to come together to conserve native pollinators by providing them with healthy habitat that is rich in a variety of native plants, provides nest sites, and is protected from pesticides." Plant identification signs will be added to let visitors know what plants are beneficial to the wildlife, especially pollinators. The Fairy Trail Garden adds one acre, or 43,560 square feet, of pollinator habitat to the mountain. As advocates for pollinators on Lookout, we are very thankful for Jimmy Campbell, Kenny Lee, and the committee of mountain residents for this amazing gift, said organizers. Mr. Campbell points out, "Even though this garden is on the Georgia side, it is a garden to be enjoyed by all the residents on Lookout Mountain." Fairy Trail Garden is dedicated to the city of Lookout Mountain's Founding Fathers of the Past and to our Caring Community Members of the Present. For more information on design and plant lists, contact Ann Brown at brownw01@yahoo.com or Candace Wells cfw1985@gmail.com Garden clubs work to conserve native pollinators on Lookout Mountain by Penny Simmons and Ann Brown:

<https://beecityusa.org/wp-content/uploads/2022/07/Lookout-Mountain-2022-Article-1-Garden-Clubs-work-together.pdf>





Dennis Bishop, Ann Brown and Candace Wells welcome trees and shrubs for planting at the Fairy Trail Garden.



Working with students at Fairyland Elementary School Pollinator and Monarch Waystation garden.



Talking with children about pollinators at the Children's Museum, Chattanooga, TN, Cheri Hubbard as Ms. eastern bumble bee

Policies & Practices

Lookout Mountain, TN and GA Integrated Pest Policy for Bee City USA Gardens This policy was established by the Bee City USA Committee of Lookout Mountain, in 2018. 1. Pesticide-free plants are purchased for all plantings. 2. Organic fertilizers are used when necessary. 3. Leaves and other organic compost mediums are used to mulch the beds. 4. Chemical fertilizers, pesticides, fungicides, and herbicides are not used near or in any of the gardens. 5. City does not spray near gardens or along the roads leading to gardens. Ann Brown and Candace Wells, Co-Chairs

Integrated Pest Management Plan: [Lookout Mountain Integrated Pest Policy for Bee City USA Gardens.docx](#)

Recommended Native Plant List: [Butterfly and Moth Host Plants.docx](#)

<https://tnvalleywildones.org/plant-info/native-plants-for-the-tennessee-valley/>

Recommended Native Plant Supplier List:

<https://tnvalleywildones.org/native-plants/>

Learn More

brownw01@yahoo.com, cfw1985@gmail.com

<https://www.facebook.com/BeeCityLookoutMountain>





Dedication of Fairy Trail Garden. Lulu Brock, Jimmy Campbell, Kenny Lee, Ann Brown, Mayor David S. Bennet, Candace Wells, Denise Taylor, and Caroline Williams, City Council Member.

