

Bee City USA - Grapevine

Report on 2022



Pollinator Habitat Creation & Enhancement

The community created 14 AC of pollinator habitat by removing the acreage from contracted mowing services. The PARD Planning Manager worked with the City's Floodplain Manager, Streets and Drainage Division, Park Maintenance Division and adjacent Homeowner Association to gain support for the project.

How many habitat projects did you help to create or enhance last year?

1

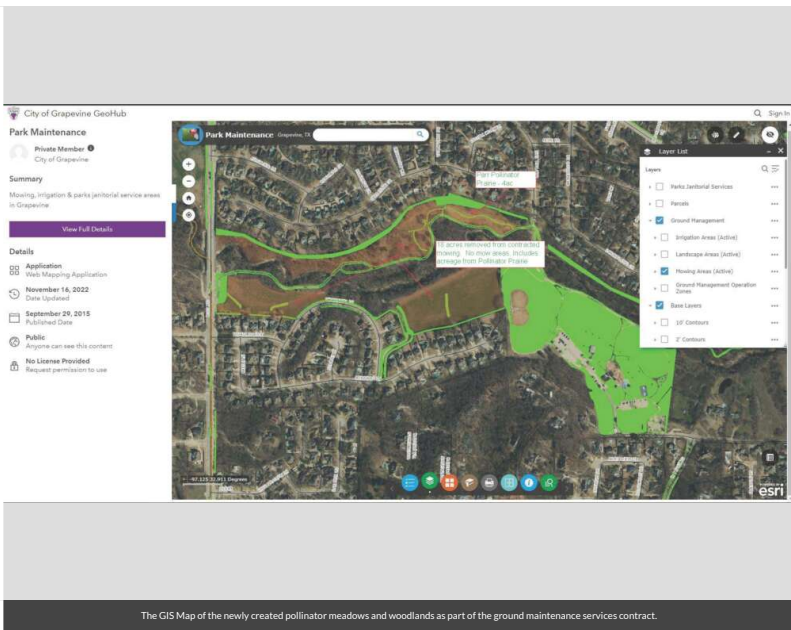
How many total square feet of habitat were created or enhanced?

609840

How many volunteers helped with those projects?

Please check all that describe the habitats your affiliate helped to create or enhance last year with pollinator benefit in mind.

- Natural area with tree snags and stumps, and bare areas for ground nesting species
- Meadow



Education & Outreach

1. "The Pesticide Dilemma" Educational Lecture – hosted event – facilitated by Dallas Sierra Club. The history and use of pesticides in the U.S. and their effects on pollinators and the overall environment. 2. "Native Plants" Educational Lecture – hosted event – facilitated by organic garden center owner, Joyce Connelly. Joyce presented information on native plants for our location, which nurture and attract pollinators. 3. "Garden of a Thousand Bees" movie – co-hosted with Grapevine Public Library. Kicked off Pollinator Week, a beautiful documentary about the lives of bees in the film-maker's tiny urban garden. 4. Parks for Pollinators event – hosted – Using the iNaturalist app, observers learned the value of pollinators such as bees and butterflies and made observations throughout a four-acre habitat restoration area. 5. Butterfly Flutterby – co-hosted – By partnering with the City's Convention and Visitors Bureau, this annual event celebrates Monarch butterflies and their migration from Canada to Mexico by way of Grapevine. Education and hands-on activities are located in one of our most beautiful parks, the Grapevine Botanical Gardens.

How many pollinator-related events did your affiliate host or help with last year (in total)?

5

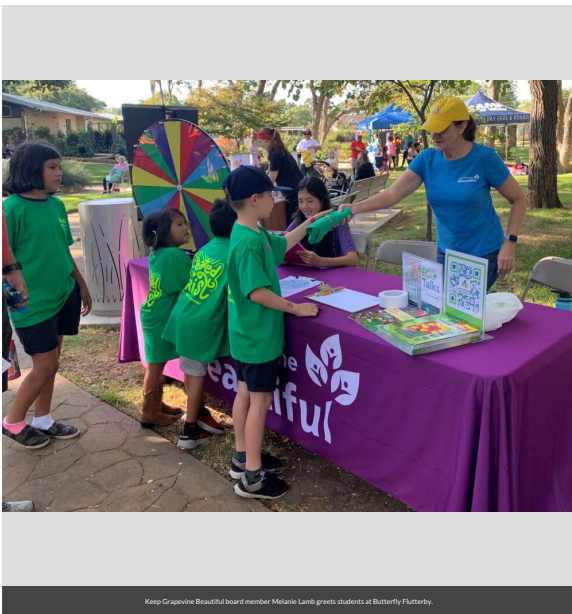
How many people attended those events (in total)?

2154

How many Bee City USA logo street signs have you installed to date (in total)?

Did your city council/county commission (highest elected body) issue a proclamation for National Pollinator Week last summer?
Please note: this is now an optional activity.

- Yes



Keep Grapevine Beautiful board member Melanie Lamb greets students at Butterfly Platterby.



Families attend the Parks for Pollinators K12-off event next to new interpretive signage at the Park Pollinator Prairie.

Native Bee & Butterfly Pollinators
Homestead Farms - Keller, TX

How to Improve Bee Habitat

	Nesting	Feeding	
BEES	<ul style="list-style-type: none"> ● Sweat Bees Dark: <i>Lasioglossum</i> (10 species) Green: <i>Agopostemon angulatus</i> <i>Agopostemon texanus</i> Striped: <i>Halictus ligatus</i> <i>Halictus trigratus</i> ● Plasterer Bee <i>Colletes manducalis</i> ● Resin Mason Bee <i>Dianthidium curvatum</i> Chimney/Mining Bee <i>Perdita ignota</i> <i>isopappi</i> <i>Psalothrix bombiformis</i> ● Sunflower Bee <i>Svaestra atripes</i> ● Squash Bees small: <i>Eucera pruinosa</i> large: <i>Eucera kansensis</i> large: <i>Eucera strenua</i> ● Longhorned Bees <i>Melissodes</i> (4 species) ● Leafcutter Bee <i>Megachile brevis</i> ● Small Carpenter Bee <i>Cryptus shinerayi</i> ● Cuckoo Bee <i>Sphecodes</i> sp. 	<ul style="list-style-type: none"> ● Ground nesters ● Cavity or wood nesters 	<ul style="list-style-type: none"> ● Specialist larvae feed on few species in 1 plant family ● Generalist larvae feed on several species in > 2 plant families
BUTTERFLIES	<ul style="list-style-type: none"> ● Skippers Orange skipper <i>Anisopteryx loping</i> ● Grass/Fiers skipper <i>Hylephila phylus</i> ● Southern Dark/Clouded skipper <i>Lerema accius</i> ● Southern/Eufala skipper <i>Lerodea eufala</i> 		
	<ul style="list-style-type: none"> ● Whites & Sulphurs Dainty Sulphur <i>Nathalis iole</i> 		

● **Leave bare ground for ground-nesters' young to survive until spring**

● **Leave stems and leafy growth for cavity-nesting bees**

● **Leave woody areas for wood-nesting bees**

● **Maintain diverse native flower meadows, blooming from April to August to provide bees with nectar & pollen**

● **Keep bees**

● **Sunflower**

● **Bees**

● **KEY**

● **Specialist larvae feed on few species in 1 plant family**

● **Generalist larvae feed on several species in > 2 plant families**

© Osborne, P.H., Kim, B.H., David, T., 2015

Keep Grapevine Beautiful partners with Grapevine Parks & Recreation Department. Each season over 25,000 copies of our Go Grapevine Magazine are delivered to homes. The attached picture was included in the Fall 2022 edition.

Policies & Practices

In 2022 the Parks and Recreation Department removed pesticide spraying from the new grounds management and landscaping services contract as well as removing it from the arbor services contract except for fire ant abatement.

What actions have you taken to make pest management practices more pollinator-friendly?

- Avoided use of pesticides in public sites containing designated pollinator habitat or other sensitive features (except when targeted use is deemed the best option for invasive or noxious weed, insect or disease management)
- Dropped pesticide use altogether on city or campus grounds

Are efforts underway in your community to further reduce pesticide use in residential or business areas? This may include neighborhood-led efforts, outreach to landscapers, etc. If so, please describe.

We have hosted an educational session on how best to use pesticides but there have not been any grass roots efforts to

reduce pesticide use.

In your city or campus, are any policy initiatives underway to further protect pollinators, people or waterways from pesticides?

No additional ones.

Please describe actions by your affiliate to attend training on ecologically-based Integrated Pest Management and/or to review IPM plans and programs considered of high quality by Bee City USA?

We have hosted an educational session, KGVB has down loaded IPM plans from the Bee City USA website and representatives have attended webinars hosted by Bee City USA.

Integrated Pest Management Plan:

Recommended Native Plant List:

<https://gograpevine.com/get-involved/parks-programs/bee-city-usa/>

Recommended Native Plant Supplier List:

<https://gograpevine.com/get-involved/parks-programs/bee-city-usa/>

Learn More

<https://keepgrapevinebeautiful.org/>

<https://www.facebook.com/kgvb.org>

<https://www.instagram.com/keepgrapevinebeautiful>

<https://twitter.com/KGVBTexas>



Bee City USA committee made up of Keep Grapevine Beautiful Board members and supporting staff.