

Bee Campus USA - University of Iowa

Report on 2023



Pollinator Habitat Creation & Enhancement

Please describe pollinator habitat creation or enhancement projects in your community in 2023, and whether your committee hosted them or not.

- 3 new pollinator gardens that included milkweeds and other native plants – Committee hosted or cohosted
- 3 invasive species removal events – Committee cohosted
- 1 tree seedling planting event – Committee cohosted
- Multiple prescribed burns in native habitat – Committee cohosted

How many habitat projects did you help to create or enhance in 2023?

10

How many people (staff, volunteers, students, partners, etc.) helped with those projects?

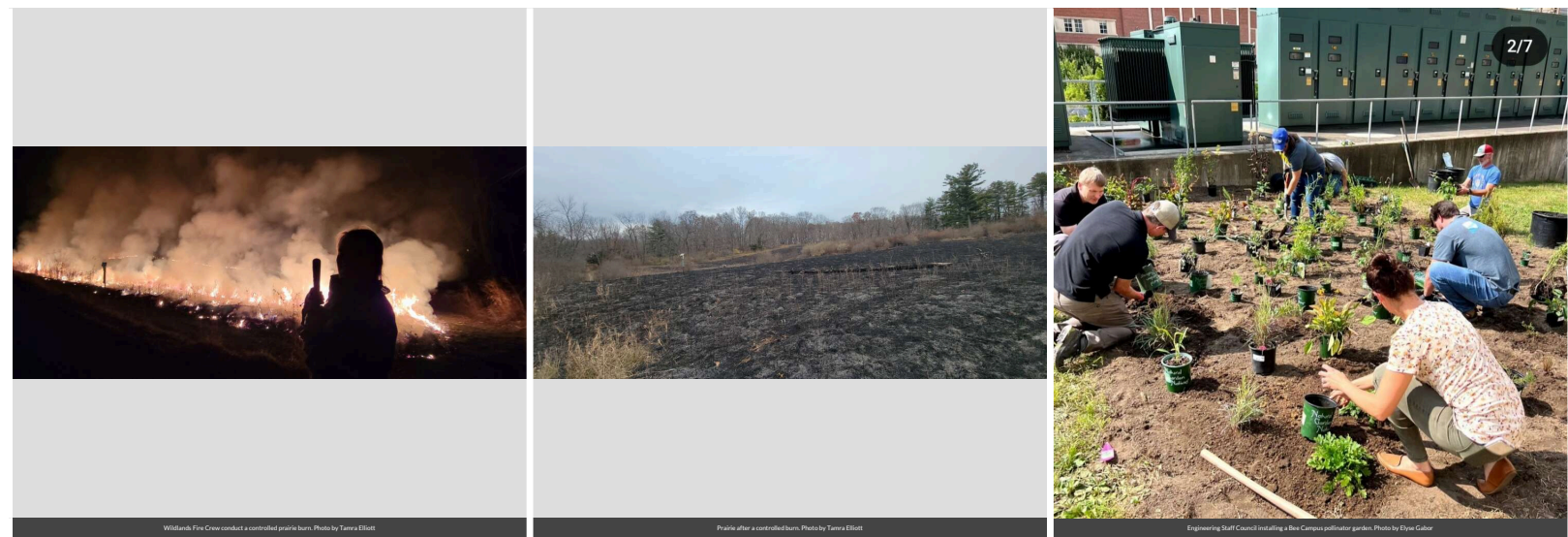
150

How many projects benefit monarchs, milkweed, or nectar plantings?

10

Please check all that describe the habitats your affiliate helped to create or enhance last year with pollinator benefit in mind.

- Flower garden
- Native milkweed planting for monarchs and bees (where appropriate)
- Invasive/exotic plant species removal for habitat improvement
- Native pollinator-friendly tree planting



Education & Outreach

Please describe pollinator conservation events or outreach activities in your community in 2023, indicating whether your committee hosted them or not.

• Growing native plants from seed workshop – February 2023 – Committee cohosted • Presence at local Prairie Preview event – March 2023 – Committee participated • Spring wildflower hike at Macbride Nature Recreation Area (MNRA) – April 2023 – Committee cohosted • Earth Everyday make and take insect hotels – April 2023 – Committee hosted • Vascular Plants of Johnson County hike – June 2023 – Committee cohosted • 3rd Annual BioBlitz at Ashton Prairie Living Lab – July 2023 – Committee cohosted Iowa City Butterfly Count at MNRA – July 2023 – Committee cohosted • On Iowa! prairie tour – August 2023 – Committee cohosted • Bee Surveys at MNRA – August 2023 – Committee cohosted • Iowa DNR’s Wildlife Division Multiple Species Inventory and Monitoring Project – Multiple dates – Committee cohosted • Discover your University tours at MNRA – Multiple dates – Committee cohosted.

How many pollinator-related events or outreach activities did you host or help with in 2023 (in total)?

11

How many people attended those events (in total)?

350

Number of permanent interpretive/educational/Bee Campus USA signs installed to date?

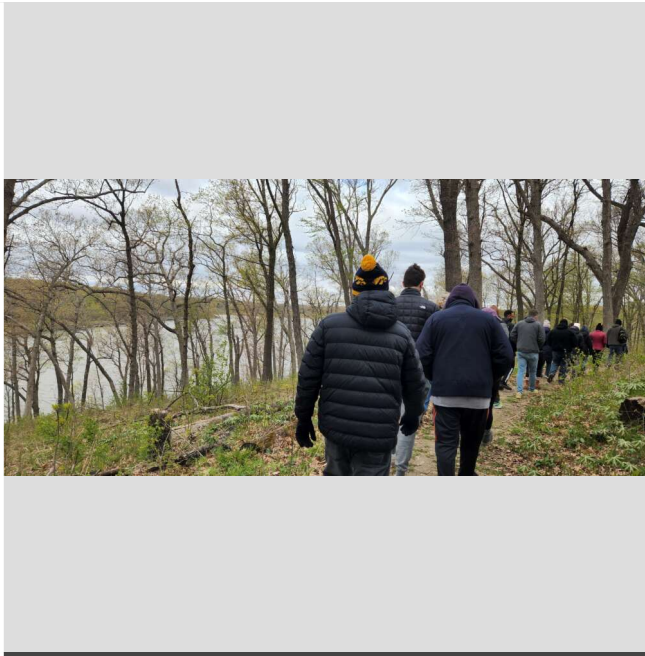
12



Community members learn about bees and make insect hotels from bamboo and burlap at an Earth Day event. Photo by Beth MacKenzie



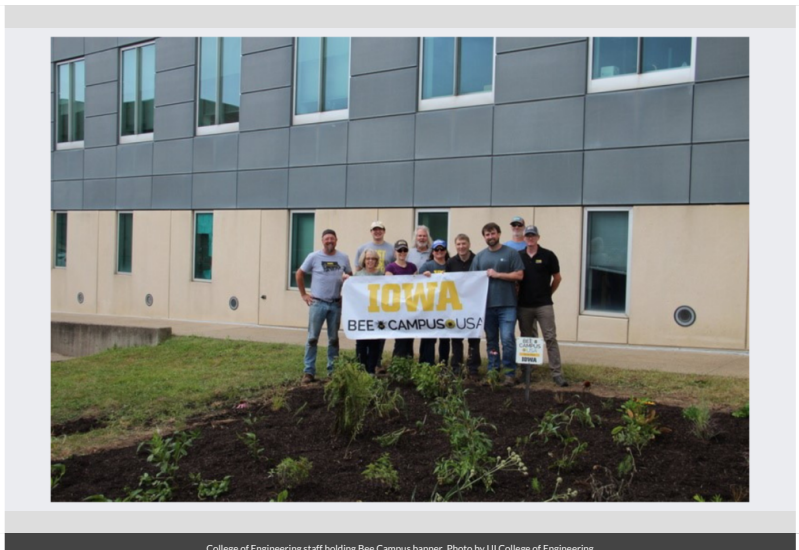
Community members learn about Bee Campus USA at the 3rd Annual BioBlitz at Ashton Prairie Living Lab. Photo by Beth MacKenzie



Community members learn to identify ephemerals on spring wildflower hike. Photo by Beth MacKenzie



Bee Campus sign in Engineering garden. Photo by Elyse Gabor



College of Engineering staff holding Bee Campus banner. Photo by UI College of Engineering

Curriculum, Continuing Education, & Service Learning

Please describe the curriculum your campus engaged in 2023, indicating whether it was part of a for-credit course or continuing education.

- **Prairie Restoration (for credit)** – With this course, students actively participate in the ecological reconstruction of a prairie on the UI campus. Through basic fieldwork, students come to better appreciate the principles and techniques of prairie restoration.
- **Entomology Lab (for credit)** – With this course, students actively participate in the ecological



reconstruction of a prairie on the UI campus. Through basic fieldwork, students come to better appreciate the principles and techniques of prairie restoration. • Environmental Conservation (for credit) – Urban living has many benefits, but also has implications for the health and well-being of urbanites as well as for the survival of species and integrity and functioning of urban ecosystems. Identifying ways to manage cities to sustainably support healthy human populations, biodiversity, and ecosystems requires us to understand how people experience, value, benefit from, are harmed by, and make decisions regarding urban nature. • Wildlife & Habitat Conservation Law (for credit) – This interdisciplinary course introduces students to the law of species and habitat protection, focusing on animals and plants located in the Macbride Nature Recreation Area, managed by UI WILD. Students will learn how state and federal laws such as the Endangered Species Act, Migratory Bird Treaty Act, Bald and Golden Eagle Protection Act, National Environmental Policy Act, and Clean Water Act work in practice by learning from experts who apply these regulatory frameworks in the field. • Explore Local Sustainable Landscapes (for credit) – Iowa was once part of a vast, sustainable prairie ecosystem; a sea of grasses and wildflowers, home to countless animals, great and small. Now, with most of the original Tallgrass Prairie gone, people are planting and restoring prairie all over the Midwest. This workshop explores newly created sustainable landscapes on the UI campus and in the local community.

How many of your for-credit courses included pollinator-related information in 2023?

5

How many students attended those for-credit courses?

100

How many service-learning projects did your campus host and/or support to enhance pollinator habitat on- and off- campus?

6

How many students participated in service-learning projects in 2023 to enhance pollinator habitat on or off-campus?

90

Please describe the service-learning projects your students were engaged in 2023, indicating which, if any, were associated with a course.

• 1 new pollinator garden that included milkweeds and other native plants – involved students from the Prairie Restoration course • 2 invasive species removals – involved student orgs and students from the Environmental Conservation course • 1 tree seedling planting – involved student orgs • 1 bioblitz event – involved students from student orgs, student interns/fellows/researchers • 1 bee survey – involved students from the Wildlife & Habitat Conservation Law course



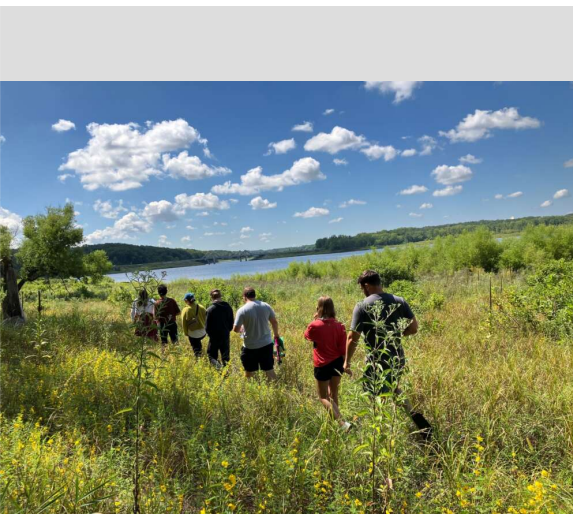
Honors Primetime students learn how to use iNaturalist for plant and insect identification. Photo by Beth MacKenzie



Prairie Restoration class conducting quadrat sampling at prairie. Photo by Mike Fallon.



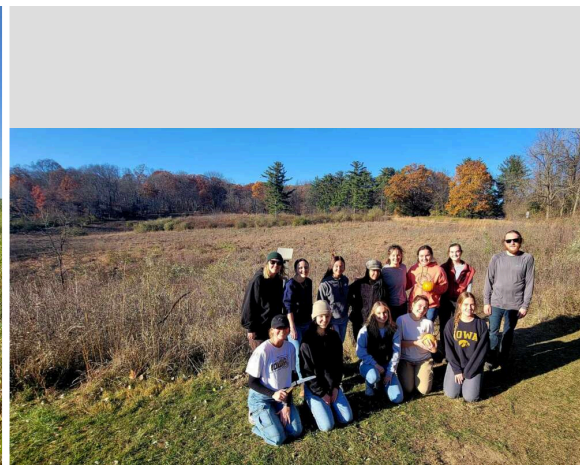
Entomology Lab collecting using a malaise trap to collect insect samples. Photo by



Wildlife & Habitat Conservation Law students conducting a rusty patch bumble bee survey. Photo by Alexa Stechschulte



Wildlife & Habitat Conservation Law students conducting a rusty patch bumble bee survey. Photo by Alexa Stechschulte



Environmental Conservation Class help remove invasive shrubs from prairie. Photo by Tanna Elliott

Policies & Practices

Please describe actions taken to make pest management more pollinator-friendly.

- We amended our 3rd party landscape services contracts to include language requiring vendors to follow IPM best practices and to eliminate the use of neonicotinoids on campus.
- We drafted an IMP for University landscape services staff to follow and are in the process of finalizing that plan.

In your city or campus, are any policy initiatives underway to further protect pollinators, people or waterways from pesticides?

Yes, we have a campus-wide goal to improve water quality in the Iowa River by implementing best practices for stormwater management and water conservation on campus. Some of the tactics to achieve this goal include reducing the application and toxicity of pesticides by following an IPM plan, installing rain gardens or bioswales, and replacing lawn with native plantings.

Did your committee participate in any continuing education on ecologically-based Integrated Pest Management planning?

No

Please check actions you have taken to make pest management practices more pollinator-friendly.

- Implemented or maintained a written IPM plan
- Avoided use of pesticides in public sites containing designated pollinator habitat or other sensitive features (except when targeted use is deemed the best option for invasive or noxious weed, insect or disease management)
- Eliminated use of neonicotinoid insecticides on city or campus grounds

Any lessons learned you would like to share?

We have a large Bee Campus committee, and members represent many different areas of expertise. We have students from a variety of academic interests, professional staff who are experts in land management practices, and faculty who are experts in native plants, insects, and prairie restoration. This has allowed us to build momentum, make progress in our respective areas, and get buy in for campus-wide goals. It has also provided an opportunity for all members to understand the concerns, limitations, policies, procedures, and organizational structure of other areas. This helps us make informed decisions about what to prioritize and who to collaborate with on specific projects.

Learn More

Integrated Pest Management Plan: [Integrated Pest Management Plan - Draft.pdf](#)

<https://sustainability.uiowa.edu/pest-management>

Recommended Native Plant List: [Native Plants List for Landscaping Use.xlsx](#)

<https://sustainability.uiowa.edu/iowa-native-plants>

Recommended Native Plant Supplier List:

<https://tallgrassprairiecenter.org/pin-resources>

<http://sustainability.uiowa.edu>

sustainability@uiowa.edu

<https://instagram.com/@SustainUI>

<https://facebook.com/@SustainUI>

<https://twitter.com/@SustainUI>

