

# Bee Campus USA - Washtenaw Community College

Report on 2023

## Pollinator Habitat Creation & Enhancement

*Please describe pollinator habitat creation or enhancement projects in your community in 2023, and whether your committee hosted them or not.*

Multiple in-house landscape renovation projects in 2023 enhanced and created pollinator habitat at various locations on campus. Approximately 2500 sq ft of renovated landscape beds were planted with Hydrangea, Perovskia, Asclepias, Astilbe, Cercis canadensis, and sit adjacent to similar existing pollinator friendly landscapes. In addition, thousands of annual flowers were planted in the spring to support pollinators with species such as Lobularia, Marigold, Zinnia, Sedum, Lantana, Salvia, Lobelia, and Ageratum. An area of existing turf within a major pedestrian corridor was transformed into a new 1,650 sq ft pollinator garden planted with Asclepias, Echinacea, Salvia, Buddleia, Sedum and other pollinator friendly plants. The project was designed and installed in-house, and is home to permanent signage identifying the site as a Bee Campus USA.

*How many habitat projects did you help to create or enhance in 2023?*

3

*How many people (staff, volunteers, students, partners, etc.) helped with those projects?*

35

*How many projects benefit monarchs, milkweed, or nectar plantings?*

3

*How many total square feet of habitat were created or enhanced?*

4150

*Please check all that describe the habitats your affiliate helped to create or enhance last year with pollinator benefit in mind.*

- Flower garden
- Vegetable garden
- Natural area with tree snags and stumps, and bare areas for ground nesting species
- Pollinator-friendly lawn (with flowering clover, dandelions...)
- Herb garden

- Native milkweed planting for monarchs and bees (where appropriate)
- Invasive/exotic plant species removal for habitat improvement
- Native pollinator-friendly shrub border/hedgerow planting
- School garden



April 18, 2023, WCC planted a new pollinator garden located between LA and GM in the circle drive area for everyone to enjoy. Copyright Sandy McCarthy



WCC Food Forest June 2023. Copyright Sandy McCarthy



One of several pollinator flower gardens on campus. Copyright Sandy McCarthy 2023

## Education & Outreach

*Please describe pollinator conservation events or outreach activities in your community in 2023, indicating whether your committee hosted them or not.*

WCC participated in the “No Mow May” initiative in the spring 2023. Bee Campus USA “No Mow May” signs were placed at various locations around campus including at the Family Education Building, at the perimeter of parking areas, on an adjacent vacant parcel of land, and near our parking structure. Additional outreach programs included: Fun with Winter Seed Sowing, Library Display “Your Health and Well-being” Gardening education about gardening / pollinators / activity puzzle, An Introduction to Our Native Bees and Their Habitat Needs, Transform your Biodiversity Library Display, WCC Native Bee Campus Walk with Stefanie Steele, Xerces Society, Ann Arbor Natural Area Preservation Leaders Matt Spoor and Becky Hand for a Wildflower Nature Walk and, Student Food Forest Clean-up day, and WCC Seed Library.

How many pollinator-related events or outreach activities did you host or help with in 2023 (in total)?

29

How many people attended those events (in total)?

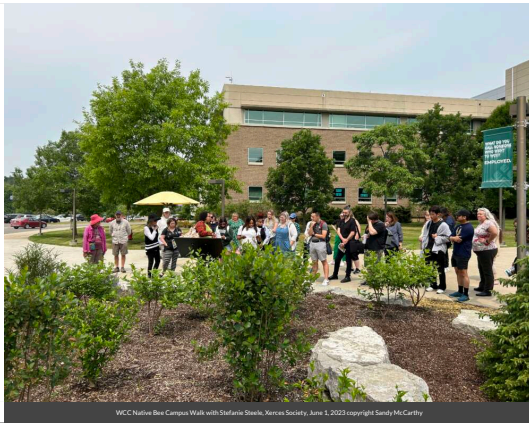
638

Number of permanent interpretive/educational/Bee Campus USA signs installed to date?

5

Number of temporary interpretive/educational/Bee Campus USA signs installed in 2023?

4

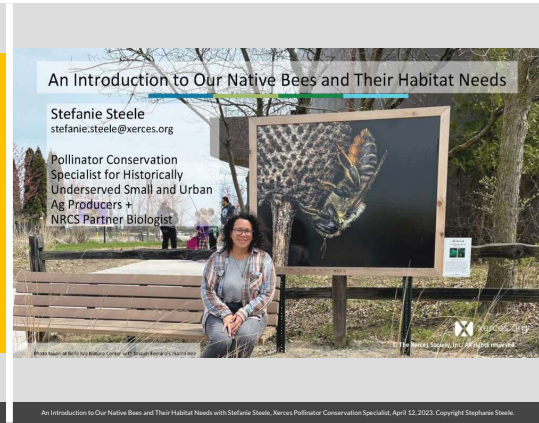


WCC Native Bee Campus Walk with Stefanie Steele, Xerxes Society, June 1, 2023 copyright Sandy McCarthy



WCC Students 4 Sustainability Seed Sorting January 2023

WTMC students Seed Sorting December 2023



An Introduction to Our Native Bees and Their Habitat Needs

Stefanie Steele  
stefanie.steele@xerxes.org

Pollinator Conservation  
Specialist for Historically  
Underserved Small and Urban  
Ag Producers +  
NRCS Partner Biologist

An Introduction to Our Native Bees and Their Habitat Needs with Stefanie Steele, Xerxes Pollinator Conservation Specialist, April 12, 2023. Copyright Stefanie Steele.

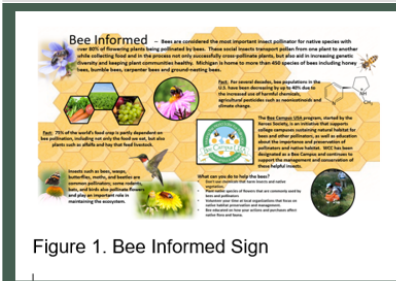


Figure 1. Bee Informed Sign



Figure 2. What is a Food Forest? Sign.



Figure 3. What are Areas of Natural Beauty? Sign.



Figure 4. Bee Campus USA and WCC sign.

Graphic display of our series of permanent educational signs highlighting pollinators and special habitats, installed throughout campus. The last sign was placed in 2023 as part of our new pollinator garden installed by students and staff.



WCC participated in the "No Mow May" initiative in spring of 2023 and posted temporary signage at designated locations throughout campus. Photo by Holly Herman.

## Curriculum, Continuing Education, & Service Learning

*Please describe the curriculum your campus engaged in 2023, indicating whether it was part of a for-credit course or continuing education.*

WCC bee and pollinator curriculum engagement for 2023 included credit courses BIO 101, 107, 161, 227, and ENV 105 offered in Winter, Spring/Summer, and Fall terms. In addition to those courses, three specific bee projects were embedded into student projects. The projects included ART 112 Basic Design I The Metamorphosis of Bees Book Final Project, VID 276 Video Graphics I – basic video design with hillside and bee project, and the WTMC Food and Garden Club (Hoop House) managed by WTMC. WCC Continuing Education Division offered 14 non-credit courses related to bees and pollinators. The classes offered included Container Gardening: A Plant in Every Pot, Fall Gardening Tips, Conserving Water Gardening, Amazing World of Animal Life in a Garden, Gardening for Pollinators, Attracting Good Bugs to Your Garden, Backyard Growing Small Fruit, Attracting Birds to your Landscape and Garden, Organic Gardening: Integrative Pest Management (two classes), Common Backyard Birds of Winter, Composting Made Easy, Spring Plant Care and Sad Plant Clinic, and Organic Gardening: Seed Starting Skills. Washtenaw Technical Middle College (WTMC) is a high school located inside Washtenaw Community College and is home to the Hoop House and a Food and Farm Club. The existence of this Hoop House has helped WTMC further its mission to explore sustainable practices and has allowed many in the community to start their gardens. Providing all people in the academic and larger community the education and materials necessary to grow a portion of one's food is the essence of inclusion and social justice. The 2023 projects included: WTMC planted over 40 varieties of vegetables that were from open-pollinated non-GMO seeds that were locally sourced. WTMC science students dissected several pollinator flowers and participated in 2 labs that investigated the role that pollinators play in plant reproduction. The Food and Farm Club planted native sunflower seeds that they harvested from the WTMC pollinator gardens and handed them out to students for Earth Day. WTMC health students planted over 50 native pollinator plants from seed and then transplanted these at the WTMC student farm. WTMC Food and Farm Club repaired 6 raised beds that housed native pollinator species. They also collected seeds from these plants and will use the seeds to populate more pollinator beds at the WTMC farm.

*How many of your for-credit courses included pollinator-related information in 2023?*

68

*How many students attended those for-credit courses?*

1280

*How many of your continuing education courses included pollinator-related information in 2023?*

14

*How many participants attended those courses?*

93

How many service-learning projects did your campus host and/or support to enhance pollinator habitat on- and off- campus?

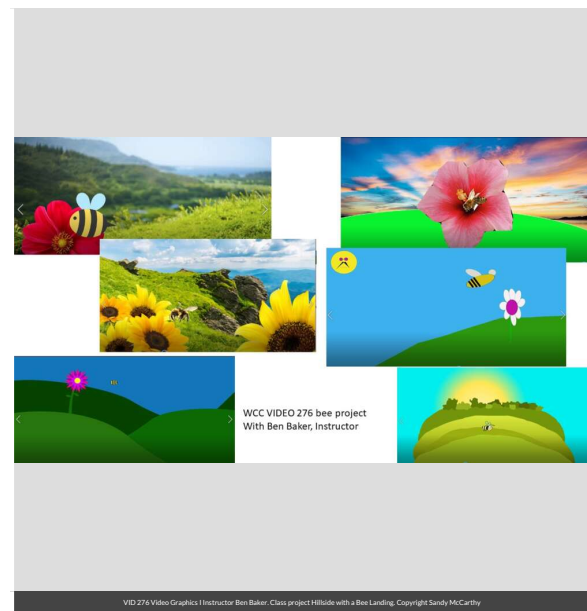
12

How many students participated in service-learning projects in 2023 to enhance pollinator habitat on or off-campus?

425

Please describe the service-learning projects your students were engaged in 2023, indicating which, if any, were associated with a course.

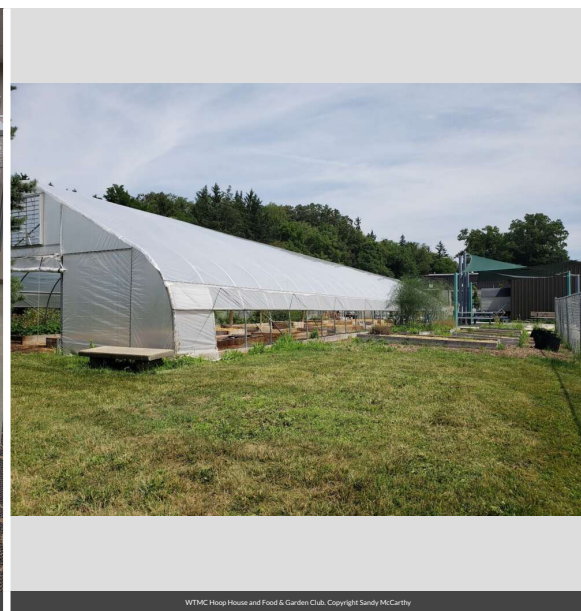
Washtenaw Community College students engaged in many service-learning projects during the 2023 academic year. The service learning projects include The new Pollinator Garden, WCC Seed Library, Blooming Lollipops, WCC Native Bee Campus walk, ART 112 Basic Design I, VID 276 Video Graphics I, and four WTMC Food and Garden Club projects. The new WCC pollinator garden was planted by WCC students, staff, and volunteers in April 2023 during Earth Week. The garden includes 1650 square feet of pollinator-friendly plantings including: black chokeberry, red heart rose of Sharon, hydrangea, buttonbush, butterfly bush black knight, autumn fire stone crop, leaf grass, salvia, echinacea, and butterfly weed. ART 112 Basic Design offered by instructor Jill Jepsen supported the WCC Bee Campus USA service learning project with The Metamorphosis of Bees final student assignment. METAMORPHOSIS: change of physical form, structure, or substance especially by supernatural means (source: Merriam Webster). The final assignment requirement is an accordion book, that creates a list of words that are associated with bees, and from our research on the study of bees, find a theme that can change from one idea/image into another. The student projects are on display at the Bailey Library from January to August 2024 to share with our community the work of students who educate and support the Bee Campus USA initiative. The project was completed during the Fall 2023 semester by 21 students. VID 276 Video Graphics I with instructor Ben Baker included one assignment with the following prompt: Create a scene of a grassy hillside. A bee lands on a flower. Make your layers or download images from the internet. (Or both!) And then I harvest the bees! We have a lot of fun with these warmups; sometimes it's mountains of fruit and dancing cats. The project was completed during the Winter 2023 semester by 15 students. WCC Students 4 Sustainability (S4S) with the guidance of Dr. Emily Thompson, Biology and Environmental Science Departments, established the Food Forest on campus in 2019. The Food Forest is also designed to support all pollinators.



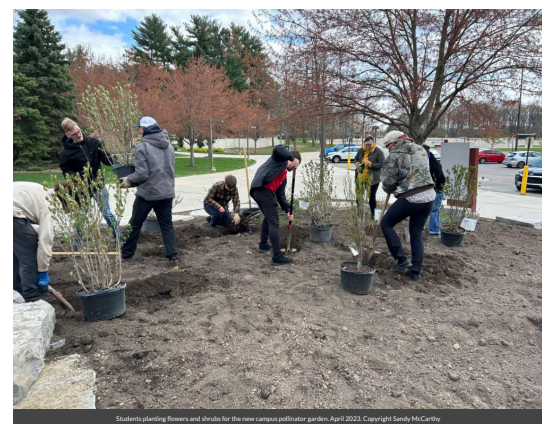
VID 276 Video Graphics | Instructor Ben Baker, Class project | Slides with a Bee Landing, Copyright Sandy McCarthy



ART 112 Basic Design I final project The Metamorphosis of Bees with Instructor Jill Jopson, Copyright Sandy McCarthy



WTMC Hoop House and Food & Garden Club, Copyright Sandy McCarthy



Students planting flowers and shrubs for the new campus pollinator garden, April 2022, Copyright Sandy McCarthy



Blooming Lobbies at the Library to encourage pollinator flower gardens with our students, April 2022, Copyright Sandy McCarthy



Library Display May - August 2022 Transform your Biodiversity, Copyright Sandy McCarthy

## Policies & Practices

*Please describe actions taken to make pest management more pollinator-friendly.*

WCC maintains a written IPM Plan, and reviews management practices annually for updates and revisions. The IPM plan outlines a four tiered approach not to eliminate pests, but to find a balance in the landscape. Our program avoids all pesticide use in sensitive areas and gardens, such as the Food Forest, WTMC Hoop House, green roofs, and other designated pesticide free zones. We utilize, and also specify that contractors must use pollinator friendly products such as Acelepryn for turf care in lieu of neonicotinoids, and limit applications to a single treatment. WCC is also increasing the use of bio-pesticides, which are developed from naturally occurring compounds or agents that are obtained from animals, plants, and microorganisms. Other management practices include installing chipped mulch to all landscape planting beds, and around bases of trees to reduce the applications of pesticides for controlling invasive and undesirable weeds. Plant materials and shrubs that are known to require pesticide applications for sustaining proper

health are avoided, and pest-free native and adaptive plant materials are utilized instead for new campus plantings.

*In your city or campus, are any policy initiatives underway to further protect pollinators, people or waterways from pesticides?*

No new policy initiatives are underway at this time.

*Did your committee participate in any continuing education on ecologically-based Integrated Pest Management planning?*

Landscape & Grounds staff attend regular training on proper use of pesticides, and are required to be licensed by the State of Michigan to handle and apply pesticides to the landscape. CEU's are obtained from attending seminars, classes, and site tours on research studies, pesticide alternatives, and best practices. Proper timing, application rate, correct pest identification, education, etc. are all factors that contribute to reducing pesticide use. We are active members of the Michigan Green Industry Association, and routinely attend training sessions on protecting pollinators, integrated pest management, and sustainable practices.

*Any lessons learned you would like to share?*

WCC Bee Campus USA Committee continues to meet and reflect on how to improve awareness of our campus designation. The lessons we have learned include: Collaboration on campus with faculty, student services, departments, grounds maintenance, and landscaping is key to a successful program. Our students and community are very interested in bees and pollinators. Sharing our knowledge and experience with surrounding Bee City and Bee Campus USA programs - Focusing on meeting with Ypsilanti Bee Campus USA, AA Environmental Committee/ Pollinator Committee, UofM Bee Campus USA, and WCC Bee Campus USA Bee City USA Visits Michigan Bee Campuses - September 2023 Washtenaw Community College meets with Laura Rost, National Coordinator, Bee City USA, and Bee Campus USA to share ideas, concerns, and recommendations for improvements. Document pollinator activities and projects throughout the year by creating a "shared folder" to drop in information as events take place.



“The Hoop House and outdoor classroom, utilized by the Washtenaw Technical Middle College Program is one of several pesticide free zones on WCC’s campus.” Photo by Rebecca Andrews



WCC Bee Campus USA Committee. Back row left to right: Jeremy Podolak, Monica Milla, Holly Herman, Lisa Babe, Emily Thompson. Front row left to right: Sandy McCarthy, Kimberly Hill-Edwards. Missing: Dave Wooten. Photo taken August 2023 at the new WCC Pollinator Garden

Learn More

**Integrated Pest Management Plan:** [IPM Plan LandscapeGrounds 2023.pdf](https://libguides.wccnet.edu/BeeCampus/habitat_plan)

[https://libguides.wccnet.edu/BeeCampus/habitat\\_plan](https://libguides.wccnet.edu/BeeCampus/habitat_plan)

**Recommended Native Plant List:** [Athletic Field Bioswale Plant List.pdf](https://libguides.wccnet.edu/BeeCampus/habitat_plan)

[https://libguides.wccnet.edu/BeeCampus/habitat\\_plan](https://libguides.wccnet.edu/BeeCampus/habitat_plan)

**Recommended Native Plant Supplier List:**

<http://www.nativeplant.com/index.html>

<https://libguides.wccnet.edu/BeeCampus>

[mccarthy@wccnet.edu](mailto:mccarthy@wccnet.edu)

