

Bee City USA - Laurel

Report on 2023



Pollinator Habitat Creation & Enhancement

Please describe pollinator habitat creation or enhancement projects in your community in 2023, and whether your committee hosted them or not.

Created pollinator habitat gardens at the Farmers' Market Lot. A small city park (Larry T. Smith) will be the site of the next pollinator garden and will feature the Bee City sign.

How many habitat projects did you help to create or enhance in 2023?

6

How many people (staff, volunteers, students, partners, etc.) helped with those projects?

15

How many projects benefit monarchs, milkweed, or nectar plantings?

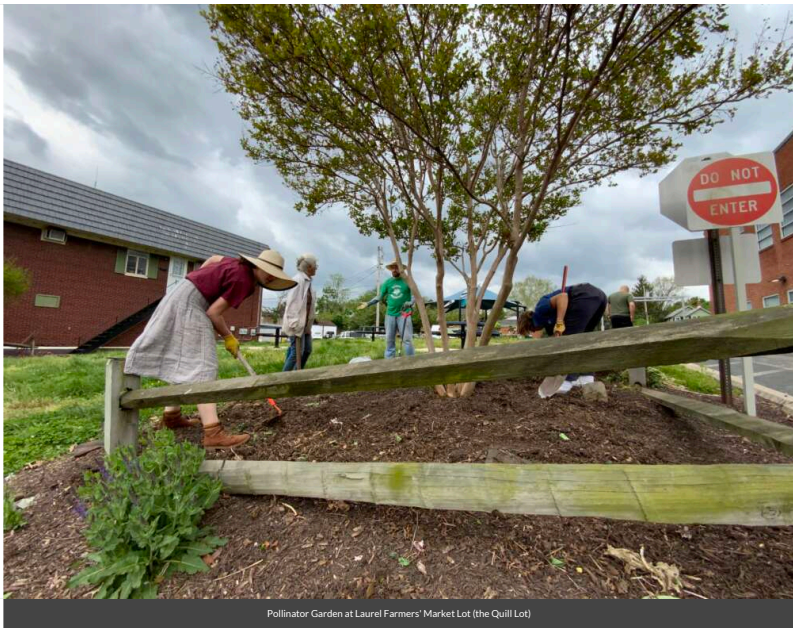
6

How many total square feet of habitat were created or enhanced?

15

Please check all that describe the habitats your affiliate helped to create or enhance in 2023 with pollinator benefit in mind.

- Flower garden
- Invasive/exotic plant species removal for habitat improvement
- Native pollinator-friendly shrub border/hedgerow planting



Pollinator Garden at Laurel Farmers' Market Lot (the Quill Lot)



Native plantings at a field dedicated to a Public Works employee killed while on duty.

Education & Outreach

Please describe pollinator conservation events or outreach activities in your community in 2023, indicating whether your committee hosted them or not.

The City hosted a No Mow April Kickoff meeting in March 2023; two Sustainable Saturday's events highlighting Bee City and protecting pollinators; an Earth Day event – Seeds of Change – which included planting native plants and pollinator plants in our revitalized Farmers' Market lot; webinar sponsored by Environmental Programs with Monarch Gardens, LLC; tabled at Patuxent's Wildlife Refuge Winter Bazaar; distributed native see packets and created "seed libraries."

How many pollinator-related events or outreach activities did you host or help with in 2023 (in total)?

6

How many people attended those events (in total)?

500



Policies & Practices

Please describe actions taken to make pest management more pollinator-friendly.

We have focused on educating our residents on the existing Tip It or Toss It initiative to reduce mosquito populations.

In your city or campus, are any policy initiatives underway to further protect pollinators, people or waterways from pesticides?

We have a Tip It or Toss It program to reduce mosquito populations thereby reducing the need for chemical treatment for mosquitoes.

Did your committee participate in any continuing education on ecologically-based Integrated Pest Management planning?

The City's horticulturist created the first IPM plan!

Are efforts underway in your community to further reduce pesticide use in residential or business areas? This may include neighborhood-led efforts, outreach to landscapers, etc. If so, please describe.

Our Environmental Affairs Committee with volunteers will expand our education on the importance of reducing the mosquito populations without using pesticides.

Any lessons learned you would like to share?

Community education and involvement is challenging!





FoamStream -- eco-friendly herbicide.



Bee City Chair at the City's First Sustainable Saturday event

Learn More

Integrated Pest Management Plan:

Recommended Native Plant List:

Recommended Native Plant Supplier List:

<https://www.cityoflaurel.org/406/Green-Living>
mblair@laurel.md.us

<https://www.instagram.com/cityoflaurelmd>

<https://www.facebook.com/laurelmaryland>

<https://twitter.com/@cityoflaurel>

