

Bee City USA - New Castle

Report on 2023



Pollinator Habitat Creation & Enhancement

Please describe pollinator habitat creation or enhancement projects in your community in 2023, and whether your committee hosted them or not.

The Rotary Club (through Bartlett Tree Service) donated 300 red maple saplings to the Town in April 2023 that were planted in three park locations by Conservation Board volunteers (Gedney, Jean Craighead George and Bicentennial). On April 22 (Earth Day), 25 of these trees were given away to citizens/visitors at Gedney Park in Millwood NY.

How many habitat projects did you help to create or enhance in 2023?

3

How many people (staff, volunteers, students, partners, etc.) helped with those projects?

12

How many projects benefit monarchs, milkweed, or nectar plantings?

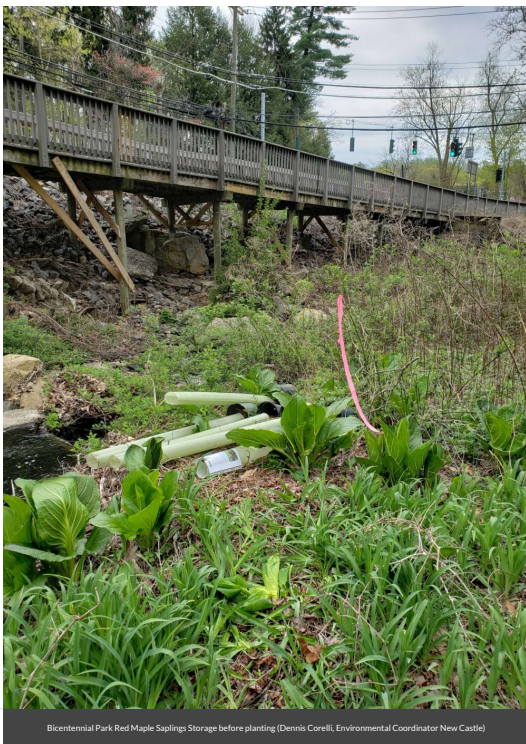
1

How many total square feet of habitat were created or enhanced?

871

Please check all that describe the habitats your affiliate helped to create or enhance in 2023 with pollinator benefit in mind.

- Roadside/rights of way planting
- Other



Bicentennial Park Red Maple Saplings Storage before planting (Dennis Corelli, Environmental Coordinator New Castle)



Jean Craighead George Park Red Maple Saplings Storage before planting (Note: standing tubes planted in 2022) (Dennis Corelli, Environmental Coordinator New Castle)



Referenced 2022 Trees-for-Tribe at Jean Craighead George Park (Dennis Corelli, Environmental Coordinator New Castle)

Education & Outreach

Please describe pollinator conservation events or outreach activities in your community in 2023, indicating whether your committee hosted them or not.

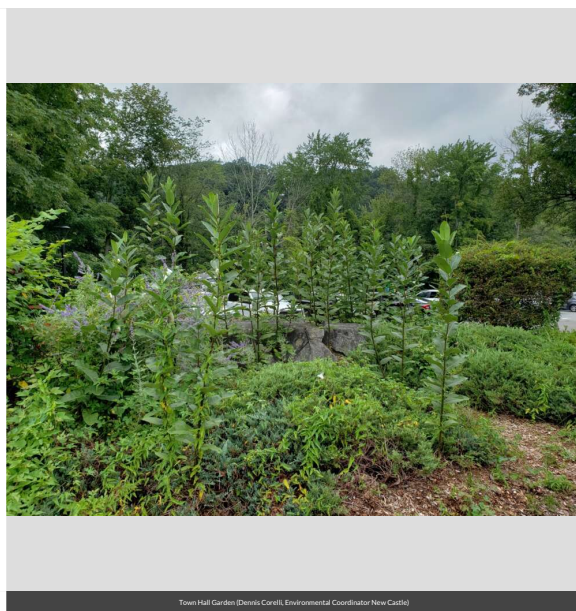
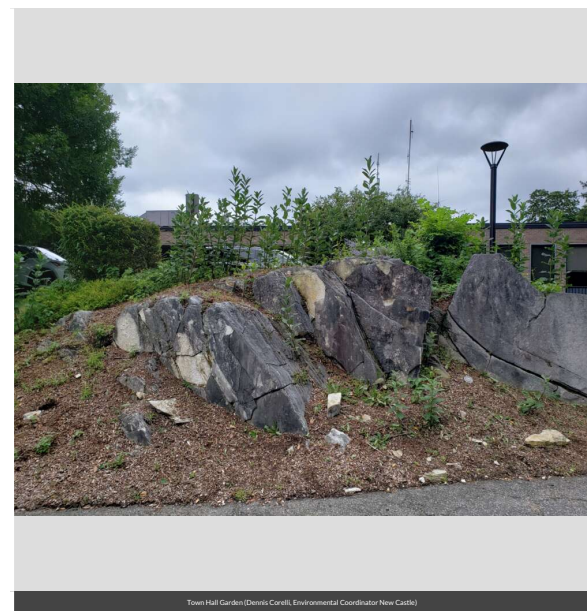
A naturally recruited common milkweed population was allowed to develop on a large bedrock outcrop/garden space located to the front of Town Hall. Also, the Conservation Board partnered with the Chappaqua Library who had started a community seed bank program the year prior. During fall, 3 burst seed pods were removed from plants and seeds placed in envelopes (15-20 seeds per envelope) for a giveaway at Gedney Park in Millwood NY on 10/28/23. In addition, a two-page milkweed seed planting guide and the field guide "Plant Invaders of Mid-Atlantic Natural Areas", Jil M. Swearingen and Judith P. Fulton were also given away. A fourth seed pod had its seeds donated to the library's community seed bank.

How many pollinator-related events or outreach activities did you host or help with in 2023 (in total)?

3

How many people attended those events (in total)?

60



Policies & Practices

Please describe actions taken to make pest management more pollinator-friendly.

The Town does not use pesticides on any public lands. In spring and late summer 2023, New Castle solicited the services of Fat and Sassy Goats to remove (eat) the riparian corridor of Tercia Brook adjacent Town Hall that was dominated by mugwort and porcelain berry. In October, the banks were hydroseeded mixed with an organic mulch tackifier (poly-free) that included native forbs (11 species) and grasses (7 species).

In your city or campus, are any policy initiatives underway to further protect pollinators, people or waterways from pesticides?

See above plus to add; the Town completed a Natural Resources Inventory in December 2022 and the Town Board adopted the report. Full size poster foam boards for report figures were also completed. The report's individual figures which include Wetlands, Watersheds, Aquifers, Streams and WQ classifications are displayed to emphasize the importance and reiterate "don't defecate where you dine" (you may know of a simpler phrase which includes a curse word).

Did your committee participate in any continuing education on ecologically-based Integrated Pest Management planning?

We do not have an IPMP.

Please check actions you have taken to make pest management practices more pollinator-friendly.

- **Avoided use of pesticides in public sites containing designated pollinator habitat or other sensitive features (except when targeted use is deemed the best option for invasive or noxious weed, insect or**

disease management)

- Distributed educational materials to residents or students to encourage the reduction or elimination of pesticide use

Are efforts underway in your community to further reduce pesticide use in residential or business areas? This may include neighborhood-led efforts, outreach to landscapers, etc. If so, please describe.

Every year at the Town's Community Day in September, the Conservation Board, Healthy Yards and Pollinator Pathways team up at booths/tables to preach/teach/share information and methods on promoting, planting and propagation of native species, as well as alternatives to pesticide/herbicide treatments.

Any lessons learned you would like to share?

Happy to say that erroneous whacking of milkweed in 2023, can and has rebounded in 2024 (see less is more example above-accidental removal in "second naturally recruited area" during 2023 yielded a social media outcry on "Chappaqua Moms.")



Learn More

Integrated Pest Management Plan: [New Castle No IPMP or Recommendations Allowed.docx](#)

Recommended Native Plant List: [tree list appendix A.docx](#)

Recommended Native Plant Supplier List: [New Castle No IPMP or Recommendations Allowed.docx](#)

<https://www.mynewcastle.org/>
dcorelli@mynewcastle.org