

Bee City USA - Vandalia

Report on 2023

Pollinator Habitat Creation & Enhancement

Please describe pollinator habitat creation or enhancement projects in your community in 2023, and whether your committee hosted them or not.

Habitats we helped maintain and/or create in 2023. We added four large flower planters at our Recreation Center and Municipal Building (pictures included) in addition to our flowerpots at the Senior Center, Justice Center, and Recreation Center. These attracted a variety of pollinators including hummingbirds. In 2023 we also developed a day with our summer camp in which a wildflower area was prepared, and the camp children went through the process of preparing the seedbed, scattering seed, incorporating the seed, and learning about the importance of pollinators. Our resident beekeeper, Mr. Al Tuttle, was also on-site and provided an educational session on the importance of honeybees and other pollinators (pictures included). Our wildflower areas at the Vandalia Art Park were maintained with removal of young honeysuckle and pear and the winter mow down. Flower population is increasing yearly in these areas. Pollinator friendly trees were planted at various locations – Sports Complex, Helke Park as part of our Arbor Day celebration, a boy scout Eagle Project, and our Commemorative Tree Program. Trees planted in 2023 included Winterking Hawthorn, Serviceberry, Elm, and Maple. Several perennial plantings in landscape beds included Coral Bells, Sedums, and Grape Hyacinths.

How many habitat projects did you help to create or enhance in 2023?

4

How many people (staff, volunteers, students, partners, etc.) helped with those projects?

65

How many projects benefit monarchs, milkweed, or nectar plantings?

4

How many total square feet of habitat were created or enhanced?

7000

Please check all that describe the habitats your affiliate helped to create or enhance in 2023 with pollinator benefit in mind.

- Flower garden
- Natural area with tree snags and stumps, and bare areas for ground nesting species

- Meadow
- Pollinator-friendly lawn (with flowering clover, dandelions...)
- Native milkweed planting for monarchs and bees (where appropriate)
- Invasive/exotic plant species removal for habitat improvement
- Native pollinator-friendly tree planting
- Native pollinator-friendly shrub border/hedgerow planting
- School garden



Planters for the City Building (Photo Credit Rudy Wells)



Wildflower area at the Vandalia Art Park. (Photo Credit Rudy Wells)



New area on east side of Recreation Center developed and planted with summer camp participants. (Photo Credit Rudy Wells)

Education & Outreach

Please describe pollinator conservation events or outreach activities in your community in 2023, indicating whether your committee hosted them or not.

Work with the Vandalia Recreation Center summer camp children on pollinator habitats and importance of pollinators.

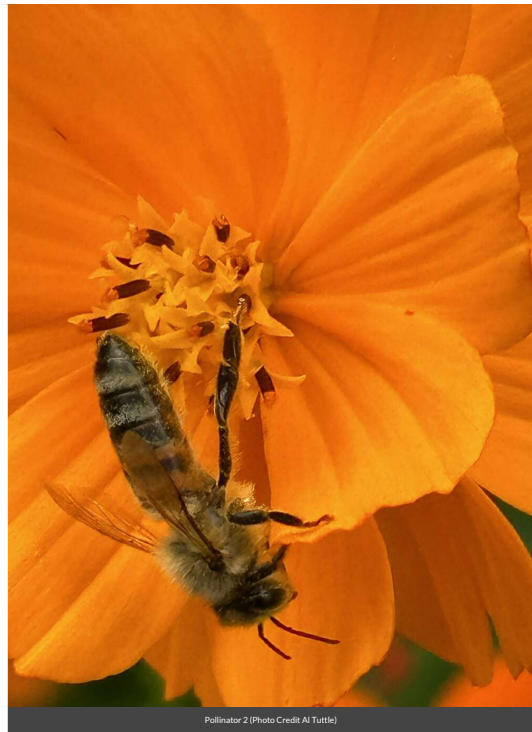
How many pollinator-related events or outreach activities did you host or help with in 2023 (in total)?

How many people attended those events (in total)?

500

How many Bee City USA logo street signs have you installed to date (in total)?

2





Policies & Practices

Please check actions you have taken to make pest management practices more pollinator-friendly.

- Implemented or maintained a written IPM plan
- Only use pesticides as a last resort within the IPM plan
- Avoided use of pesticides in public sites containing designated pollinator habitat or other sensitive features (except when targeted use is deemed the best option for invasive or noxious weed, insect or disease management)
- Implemented non-chemical pest prevention and management methods on city or campus grounds
- Eliminated pesticide uses that are solely to maintain aesthetics on city or campus grounds
- Reduced the total area of city or campus-managed lands to which pesticides are applied
- Eliminated use of neonicotinoid insecticides on city or campus grounds
- Sourced plants for city or campus grounds using “Buying Bee-Safe Plants” methods recommended by Xerces Society. (See <https://xerces.org/publications/fact-sheets/buying-bee-safe-plants>)
- Sourced plants for city or campus grounds that were not treated with neonicotinoids

Any lessons learned you would like to share?

Monitor for invasives, and take action yearly on removal.



A picture of Park Maintenance Staff removing magnolia scale from one of our commemorative trees. Pest threshold level was surpassed as the infestation was affecting plant health. This tree is small enough that staff was able to control the pest without use of a chemical control. (Photo Credit Rudy Wells)



Members of the City of Vandalia Park Board (Photo Credit Rudy Wells)

Learn More

Integrated Pest Management Plan: [Integrated Pest Management Strategy.pdf](#)

Recommended Native Plant List: [Native Plant List & Supplier.docx](#)

Recommended Native Plant Supplier List: [Native Plant List & Supplier.docx](#)