

Bee Campus USA - Juniata College

Report on 2024

Pollinator Habitat Creation & Enhancement

Please describe pollinator habitat creation or enhancement projects in your community in 2024, and whether your committee hosted them or not.

In the spring of 2024, Juniata College hosted its second annual Graduation Forest tree planting event, which was the result of efforts by our Bee Campus committee, Habitat Restoration club, Student Government, and various other faculty and students. The goal of this annual event is to re-establish native habitat while simultaneously encouraging stewardship in the newly-graduated class, inviting them year after year and seeing how their forest has grown. Over the course of three events and two different sites, students and faculty gathered to plant a total of 275 native trees. The first of these two sites sits on college-owned property off of Route 26, just north of the school and was the planting site for the majority of trees from this project. The second peripheral site is located on our college campus. In the fall of 2024, our Bee Campus committee implemented a new pollinator garden on our college campus. Located behind the museum, this new pollinator garden improved an area of our campus that had previously been bare of any greenery.

How many habitat projects did you help to create or enhance in 2024?

2

How many people (staff, volunteers, students, partners, etc.) helped with those projects?

100

How many projects benefit monarchs, milkweed, or nectar plantings?

1

How many total square feet of habitat were created or enhanced?

450000

Please check all that describe the habitats your affiliate helped to create or enhance last year with pollinator benefit in mind.

- Flower garden
- Native milkweed planting for monarchs and bees (where appropriate)
- Invasive/exotic plant species removal for habitat improvement
- Native pollinator-friendly tree planting

- Native pollinator-friendly shrub border/hedgerow planting
- School garden



Graduation forest planting off of Route 26. Photo taken by Callan Beideman



Student planting a tree as part of the Graduation Forest planting event. Photo taken by Callan Beideman

Education & Outreach

Please describe pollinator conservation events or outreach activities in your community in 2024, indicating whether your committee hosted them or not.

During the Spring semester of 2024, Juniata's Student Government hosted a pollinator planting event on May 2nd that included making seed bombs as a de-stressing event for students during finals week. All seed bombs contained seeds for native grasses and flowers. On April 21st, Juniata College held its third annual Sustainability Dinner. The Bee Campus committee was not solely in charge of it, but we were part of the larger Sustainability Dinner committee along with Eco House, the Habitat Restoration club, and various faculty and students. The dinner was completely vegan and catered by the campus dining service, Parkhurst. Reusable plates, silverware, and napkins were requested over single use plastics. The event was a celebration of Juniata's sustainable accomplishments of the year, and it was also used to promote and educate on what institutions can do to be more sustainable. In the Fall semester, Juniata's Bookend Lecture hosted an educational talk by our Bee Campus faculty representative, Dr. Muth, discussing his sabbatical project. His project consisted of creating an online tool that allows users to select native plants for projects in their area and grants nearby nurseries the ability to see these lists, encouraging them to supply native plants. His website, named "Simon Says Plant This", would connect the public to local nurseries and help inform them of what native plants are in demand as well as educating people about the importance of planting native. While this work is currently still a work in progress, we are hoping to see its completion soon.

How many pollinator-related events or outreach activities did you host or help with in 2024 (in total)?

3

How many people attended those events (in total)?

85

Number of permanent interpretive/educational/Bee Campus USA signs installed to date?

2



Pollinator garden planting stress-buster event. Photo taken by Celina Seftas



Implementing new "Pollinator Habitat" signs in an existing pollinator garden at Eco House. Photo taken by Celina Seftas.

Curriculum, Continuing Education, & Service Learning

Please describe the curriculum your campus engaged in 2024, indicating whether it was part of a for-credit course or continuing education.

Gen Bio 101 and 102 Gen Eco Biology of plant behavior ESS 1 and 2 Invasive species management Wildlife Management Environmental Economics Altered Ecosystems Natural Resource Management Conservation Biology Plant Diversity Plants, Plantations, and Creole Culture Experiential ecology Sustainable Development Practicum in

Nepal All of the above classes were offered in 2024 for credit and included some sort of pollinator-related information.

How many of your for-credit courses included pollinator-related information in 2024?

15

How many students attended those for-credit courses?

550

Please describe the service-learning projects your students were engaged in 2024, indicating which, if any, were associated with a course.

Members of our Bee Campus committee engaged with two service learning projects out in the community where we aided in the clean up of two community properties. The one property is an old farming site that is owned being restored by a local community member. We visited her site to help plant local, pollinator-friendly trees in hopes of restoring this once-forested space. For the second project, we visited another local community member's property and helped him maintain a riparian buffer area that had been planted in the previous year. We helped clean-up his property and replace damaged tree tubes. Students involved in the Plants, Plantations, and Creole Cultures course also engaged in a service-learning project while abroad. On their trip, students helped plant trees with several Barbadian communities.

How many service-learning projects did your campus host and/or support to enhance pollinator habitat on- and off- campus?

3

How many students participated in service-learning projects in 2024 to enhance pollinator habitat on or off-campus?

40



Policies & Practices

Please describe actions taken to make pest management more pollinator-friendly.

We have an IPM plan and coordinator who oversees pesticide use on all college properties

In your city or campus, are any policy initiatives underway to further protect pollinators, people or waterways from pesticides?

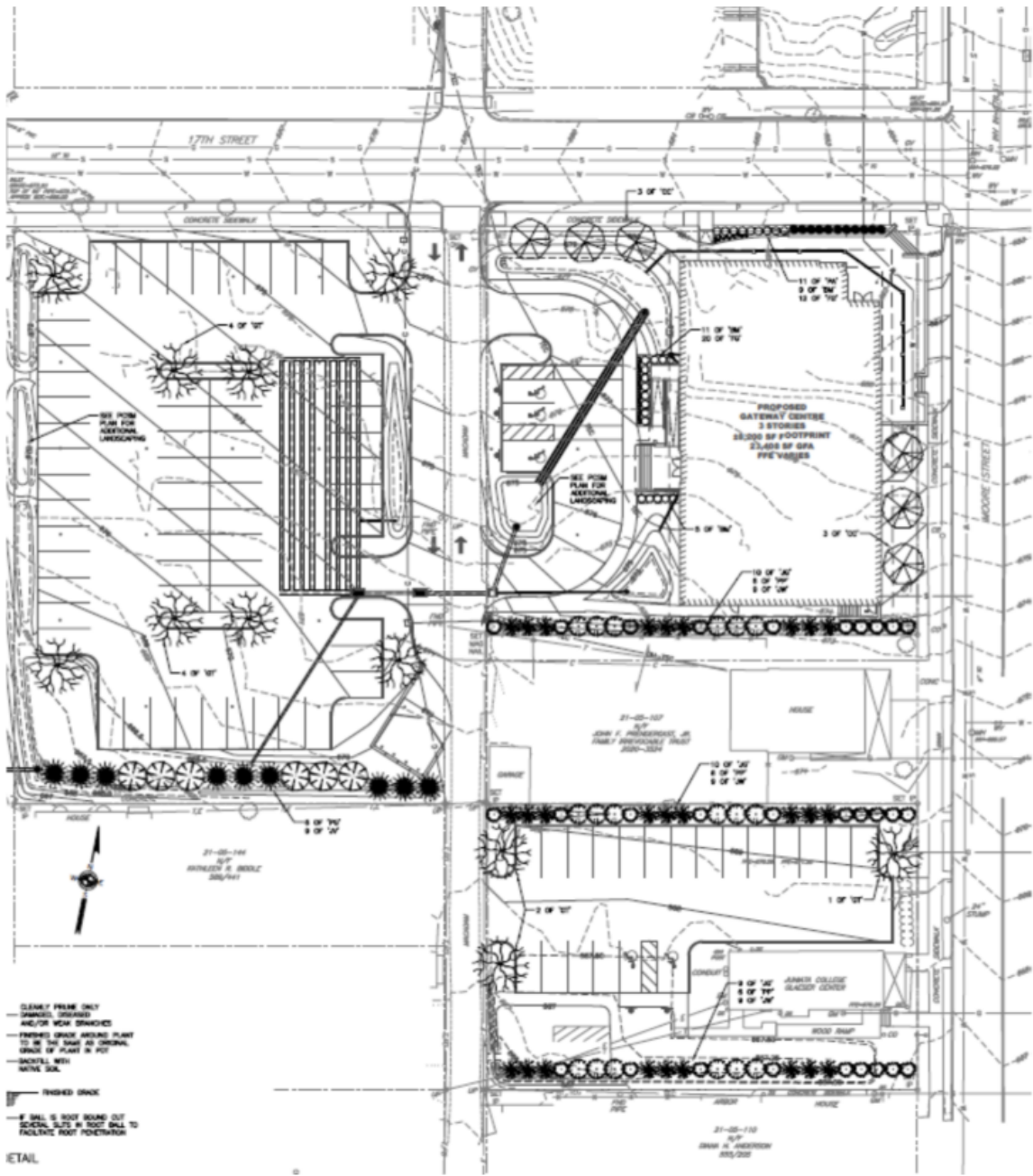
Both the College and the Borough of Huntingdon have active Tree Campus/City certifications. Additionally, we have plans underway for pollinator-friendly landscaping after the completion of our new Nursing building.

Did your committee participate in any continuing education on ecologically-based Integrated Pest Management planning?

Our IPM coordinator maintains his active certifications via participation in various training sessions.

Please check actions you have taken to make pest management practices more pollinator-friendly.

- Implemented or maintained a written IPM plan
- Only use pesticides as a last resort within the IPM plan
- Avoided use of pesticides in public sites containing designated pollinator habitat or other sensitive features (except when targeted use is deemed the best option for invasive or noxious weed, insect or disease management)
- Implemented non-chemical pest prevention and management methods on city or campus grounds
- Eliminated pesticide uses that are solely to maintain aesthetics on city or campus grounds



Plans for landscaping following the completion of our new building construction

Any lessons learned you would like to share?

Incorporating a designated sustainability director into our campus has been an integral step in advancing our campuses green initiatives.

Committee Photo

Learn More

Integrated Pest Management Plan: [IPM for Juniata College.pdf](#)

Recommended Native Plant List: [Juniata College Plant List for Bee Campus.xlsx](#)

<https://docs.google.com/spreadsheets/d/1bpACyXLTaFEsTpgjIHBCZ9Y3EsYBfFhlhg827h9u7I/edit?usp=sharing>

Recommended Native Plant Supplier List: [Native Seed Suppliers Juniata College.pdf](#)

https://docs.google.com/document/d/1yM8-8T_P17wk02Th3yiSp_I_wxEeO3dD2_Y34fwrOTg/edit?usp=sharing

<https://juniatabeecampus.wixsite.com/jcbeecampus>
muth@juniata.edu

<https://www.instagram.com/juniatabeecampus/>