

Bee Campus USA - Mississippi State University

Report on 2024

Pollinator Habitat Creation & Enhancement

Please describe pollinator habitat creation or enhancement projects in your community in 2024, and whether your committee hosted them or not.

In 2024, committee members were involved in creating a stream buffer on campus including additional natural area with snags, stumps and bare areas, and removed invasive and exotic plants for habitat improvement from over 35,000 square feet. Existing pollinator gardens were also maintained outside of the forestry, entomology, and landscape architecture buildings

How many habitat projects did you help to create or enhance in 2024?

2

How many people (staff, volunteers, students, partners, etc.) helped with those projects?

60

How many projects benefit monarchs, milkweed, or nectar plantings?

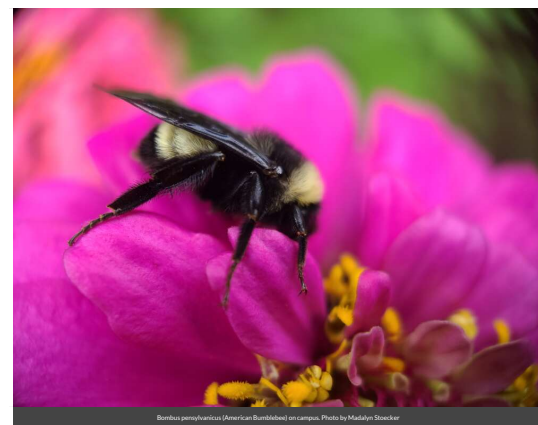
2

How many total square feet of habitat were created or enhanced?

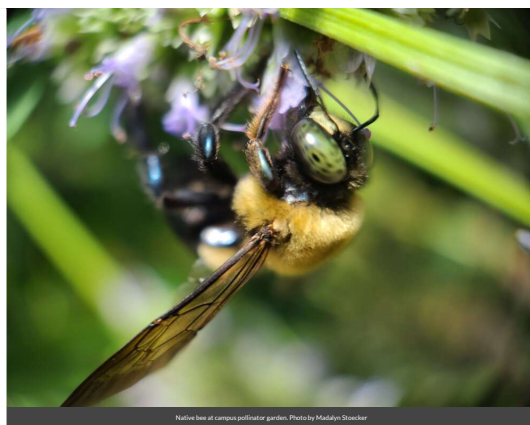
36774

Please check all that describe the habitats your affiliate helped to create or enhance last year with pollinator benefit in mind.

- Flower garden
- Natural area with tree snags and stumps, and bare areas for ground nesting species
- Pollinator-friendly lawn (with flowering clover, dandelions...)
- Invasive/exotic plant species removal for habitat improvement



Bombus pennsylvanicus (American Bumblebee) on campus. Photo by Madelyn Stocker



Native bee at campus pollinator garden. Photo by Madelyn Stocker



Example of educational signage on campus.

Education & Outreach

Please describe pollinator conservation events or outreach activities in your community in 2024, indicating whether your committee hosted them or not.

Committee members hosted the following outreach events in 2024: 1) Refuge Lawn Workshop and Field Day, 2) Turfgrass Research Field Day, 3) Ecologically beneficial turf: a changing landscape, Alabama Turf Times (trade journal article), 4) Pesticide Applicator Recertification Classes, 5) Department of Landscape Architecture Social Media Posts (Instagram, YouTube) emphasizing pollinator management, and 6) Miscellaneous professional presentations reaching over 1800 individuals.

How many pollinator-related events or outreach activities did you host or help with in 2024 (in total)?

6

How many people attended those events (in total)?

3779

Number of permanent interpretive/educational/Bee Campus USA signs installed to date?

5

Curriculum, Continuing Education, & Service Learning

Please describe the curriculum your campus engaged in 2024, indicating whether it was part of a for-credit course or continuing education.

Committee members taught the following collegiate courses in 2024 which contained pollinator related information: PSS 3133, Turfgrass Weed Management; LA 1333 Landscape Systems and Plant Communities; LA 8721 Land

Management Seminar with emphasis on habitat creation and the use of plant community descriptions from NatureServe for determination of planting specifications; NREC 4423 Environmental Assessments – as a semester long capstone project, students conducted an Environmental Assessment of a campus IPM plan; EPP 6443 Native Bees and Pollination Ecology. In addition, the following continuing education and workshop courses were conducted by members of the committee: Biodiverse Lawn Forum (academic and professional stakeholders meeting); Golf Course Superintendent's Association of America annual conference; Partnership for pollinator-friendly lawns in the Southeastern United States (Pollinator Health: Research and Application Program Project Directors Meeting); Meadows, Prairies and Other Naturalized Areas (Half Moon Education, Inc., online); Designating and Maintaining Turfgrass Landscapes for Reduced Pesticide Inputs (Southwest Turfgrass Association Recreational Landscape Conference and Expo); Future-proofing the American lawn (Southeastern Turfgrass Conferences); Groundcovers for the Southeastern United States (Groundcovers emphasizing natives and habitat creation, Half Moon Education Inc., online).

How many of your for-credit courses included pollinator-related information in 2024?

12

How many students attended those for-credit courses?

575

How many of your continuing education courses included pollinator-related information in 2024?

1

How many participants attended those continuing education courses?

375

Policies & Practices

Please describe actions taken to make pest management more pollinator-friendly.

Pesticides are not used in or around existing pollinator gardens, the university continues to develop integrated pest management strategies across campus

Did your committee participate in any continuing education on ecologically-based Integrated Pest Management planning?

Committee members are engaged in continuing education for pesticide applicators which emphasize pollinator safe practices.

Please check actions you have taken to make pest management practices more pollinator-friendly.

- Avoided use of pesticides in public sites containing designated pollinator habitat or other sensitive features (except when targeted use is deemed the best option for invasive or noxious weed, insect or disease management)
-

Committee Photo

Learn More

Integrated Pest Management Plan:

Recommended Native Plant List: [2020BeeCampusApplication_Plant list.pdf](#)

Recommended Native Plant Supplier List:

<https://roundstoneseed.com/>

ccf196@msstate.edu