

Bee Campus USA - University of Arkansas

Report on 2024

Pollinator Habitat Creation & Enhancement

Please describe pollinator habitat creation or enhancement projects in your community in 2024, and whether your committee hosted them or not.

Across the University of Arkansas campus, there were a multitude of pollinator habitats created/ enhanced in 2024, leading to healthier and more abundant pollinator habitats across campus. The Office for Sustainability currently maintains a wildflower garden, about 750 square feet in area, and works to install plant species essential to local pollinators around the office. OFS also hosted multiple workdays to help restore the Clinton Site prairie remnant prairie site, which will enhance biodiversity conservation and support local pollinators among many other benefits. Additionally, the OFS has co-hosted many Green Roof workdays on the UA Hillside Auditorium Green Roof, which provides additional habitat for pollinators, supports native species, and encourages educational/ conservation opportunities to raise awareness about the importance of pollinators and biodiversity in urban areas.

How many habitat projects did you help to create or enhance in 2024?

5

How many people (staff, volunteers, students, partners, etc.) helped with those projects?

610

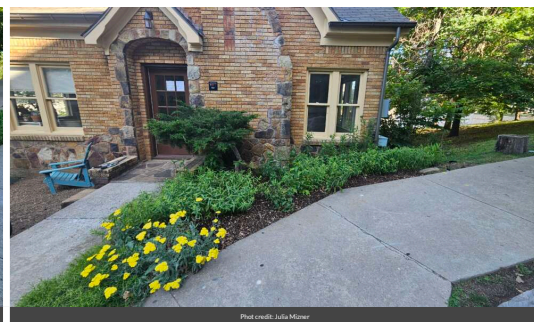
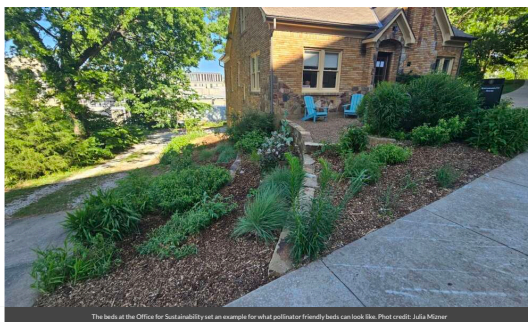
How many projects benefit monarchs, milkweed, or nectar plantings?

3

Please check all that describe the habitats your affiliate helped to create or enhance last year with pollinator benefit in mind.

- Flower garden
- Natural area with tree snags and stumps, and bare areas for ground nesting species
- Meadow
- Pollinator-friendly lawn (with flowering clover, dandelions...)
- Herb garden
- Native milkweed planting for monarchs and bees (where appropriate)
- Invasive/exotic plant species removal for habitat improvement

- Native pollinator-friendly tree planting
- Native pollinator-friendly shrub border/hedgerow planting
- Rain garden/bioswale
- Roadside/rights of way planting
- School garden



Education & Outreach

Please describe pollinator conservation events or outreach activities in your community in 2024, indicating whether your committee hosted them or not.

Pollinator conservation events at the University of Arkansas arise from a multitude of different departments and centers, so it is difficult to be aware of all of them. Regardless, the Office for Sustainability is aware of many events such as the ongoing Clinton Site remnant prairie restoration project (hosted by OFS), educational opportunities offered through the U of A Herbarium and Arthropod Museum, volunteer days to remove invasive plants and establish native pollinators along the Oak Ridge Hillside (hosted by OFS), Green Roof initiatives on the Hillside Auditorium (Co-hosted by OFS), Traverse Trail maintenance and cleanup (Co-hosted by OFS), upkeep of the OFS wildflower garden and flower beds (hosted by OFS), and a multitude of other service learning and restoration activities. Project Wingspan is also an ongoing project on campus used as a guide to increase pollinator habitat quality, quantity, and connectivity across the Midwest, leading to significant community and state-wide undertakings related to the conservation of pollinators.

How many pollinator-related events or outreach activities did you host or help with in 2024 (in total)?

45

How many people attended those events (in total)?

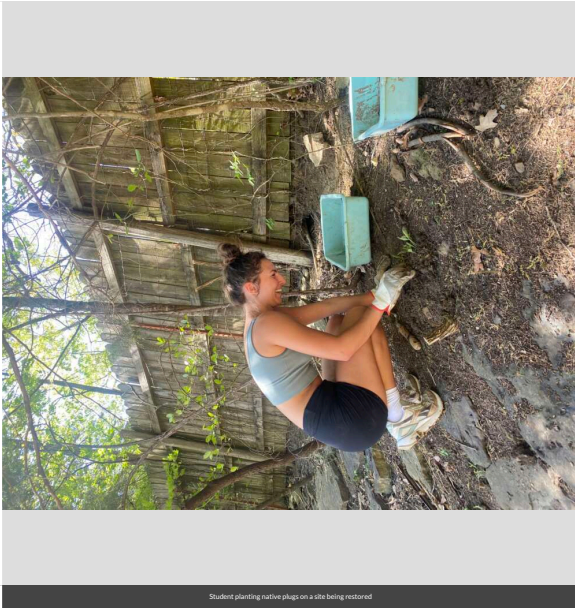
636

Number of permanent interpretive/educational/Bee Campus USA signs installed to date?

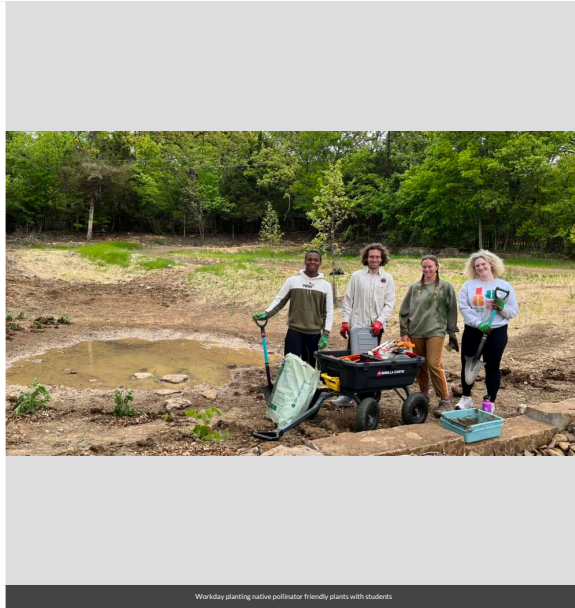
20

Number of temporary interpretive/educational/Bee Campus USA signs installed in 2024?

13



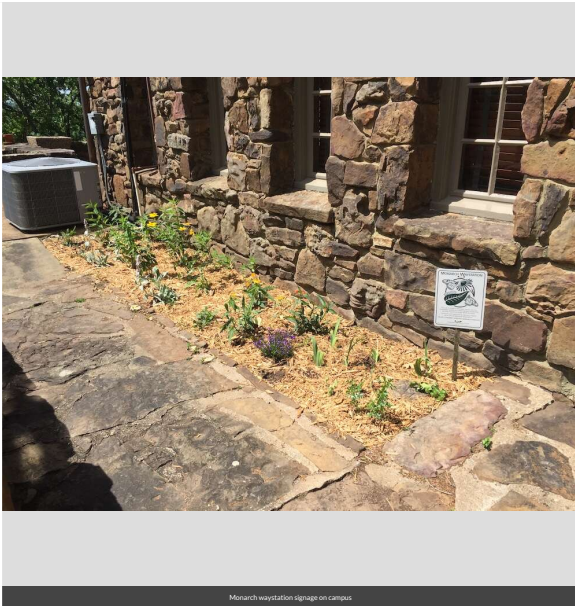
Student planting native plugs on a site being restored



Workday planting native pollinator friendly plants with students



Green roof is being restored by biology students to reintroduce native pollinators to the roof



Monarch waystation signage on campus



An educational sign installed on campus



An example of a temporary sign installed on campus

Curriculum, Continuing Education, & Service Learning

Please describe the curriculum your campus engaged in 2024, indicating whether it was part of a for-credit course or continuing education.

The curriculum for for-credit courses cover topics such as the importance of pollinators, their role in ecosystems and food production, conservation strategies, and the impacts of factors like habitat loss and pesticides on pollinator populations.

How many of your for-credit courses included pollinator-related information in 2024?

15

How many students attended those for-credit courses?

907

How many of your continuing education courses included pollinator-related information in 2024?

4

How many participants attended those continuing education courses?

20

Please describe the service-learning projects your students were engaged in 2024, indicating which, if any, were associated with a course.

Art students, for a second year in a row now, went out to the UA's Oak Knoll property to study the importance of the plants, do on-site drawings to help conserve the area visually, as well as do seed collections. The Oak Knoll is home to several naturally occurring habitats, including a tallgrass prairie, oak savanna, forested and open wetlands, and a large stream. Once prevalent in Northwest Arkansas, the prairie and savanna landscapes have largely disappeared due to agricultural and urban development. Though fragmented, the remnant contains a diversity of plant species and represents the native Ozark floral and faunal landscapes that were once widespread across Northwest Arkansas. Plant species present throughout the property are vital to the survival of certain pollinators and grassland birds. Jennifer Ogle, botanist and collections manager of the U of A Herbarium, emphasized the value of native plants, framing them as the backbone of a healthy ecosystem. She also discussed the importance of documenting the native plant species present at the site. The rich ecosystem at the site is a true jewel of campus and provides students with a unique immersive learning experience.

How many service-learning projects did your campus host and/or support to enhance pollinator habitat on- and off- campus?

10

How many students participated in service-learning projects in 2024 to enhance pollinator habitat on or off-campus?



Art students learning about historical remnant prairie in our area and the important plants that thrived in them. Photo Credit: Kes Elstathou

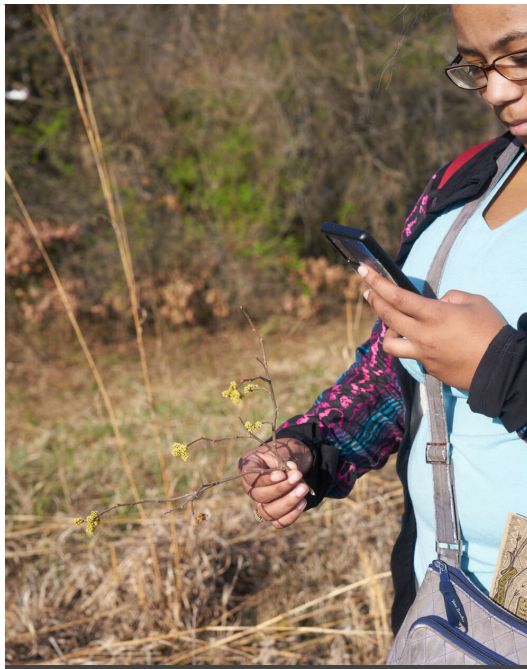


Photo Credit: Kes Elstathou



Photo Credit: Kes Elstathou

Policies & Practices

Please describe actions taken to make pest management more pollinator-friendly.

All insecticides used on the campus are materials and formulations registered by the EPA for control of targeted insects in public use areas. Materials include a range of different chemical classes with different modes of action. Specific insecticides selected for use are those which pose the least risk to humans and other non-targeted organisms from toxicity and residue persistence. A preference is given to biological control agents over non-biological toxicants. Selection of all insecticides are made in consultation with the U of A Department of Entomology as appropriate.

In your city or campus, are any policy initiatives underway to further protect pollinators, people or waterways from pesticides?

There are many policies in place to minimize pesticide negative externalities. A comprehensive overview can be found at: <https://vcfa.uark.edu/fayetteville-policies-procedures/fama/7300.php>

Did your committee participate in any continuing education on ecologically-based Integrated Pest Management planning?

The U of A does have an IPM plan that has been approved by the U of A Sustainability Council. That document can be found at: https://sustainability.uark.edu/_resources/publication-series/major-reports/2014-10-ipm-plan.pdf

Committee Photo

Learn More

Integrated Pest Management Plan: [UA ipm-plan.pdf](#)

<https://sustainability.uark.edu/resources/pdfs/REPORTS/reports-ipm-2014.pdf>

Recommended Native Plant List:

http://planning.uark.edu/campus_planning/content/landscape%20character%20zones%20and%20approved%20plants%20lists.pdf

Recommended Native Plant Supplier List:

<https://anps.org/resources/plant-sources/>

<https://sustainability.uark.edu/biodiversity/animal-life.php>
eboles@uark.edu

<https://www.instagram.com/sustainua/?hl=en>