

# Bee Campus USA - University of Illinois Urbana-Champaign

Report on 2024



## Pollinator Habitat Creation & Enhancement

*Please describe pollinator habitat creation or enhancement projects in your community in 2024, and whether your committee hosted them or not.*

The pollinator habitats/enhancement projects that we have on campus were led by some of our Bee Campus steering committee members. Most of our projects included the creation of gardens that support local bees and butterflies along with many other pollinators. In those projects most of the garden held lots of different native plant species that accommodate not only food but habitat for our pollinators.

*How many habitat projects did you help to create or enhance in 2024?*

26

*How many people (staff, volunteers, students, partners, etc.) helped with those projects?*

45

*How many projects benefit monarchs, milkweed, or nectar plantings?*

26

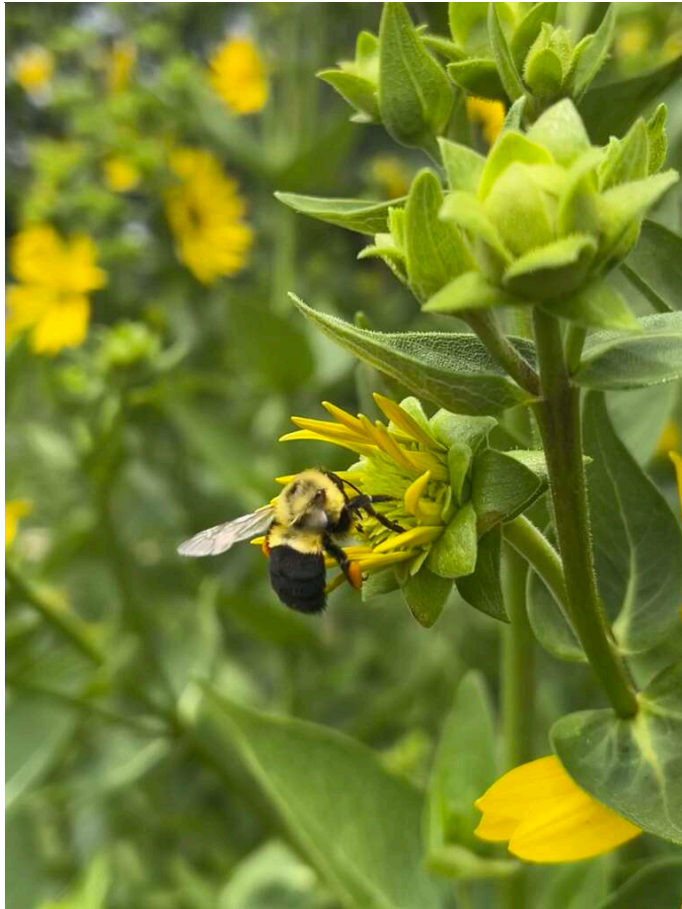
*How many total square feet of habitat were created or enhanced?*

2300

*Please check all that describe the habitats your affiliate helped to create or enhance last year with pollinator benefit in mind.*

- Flower garden
- Vegetable garden
- Natural area with tree snags and stumps, and bare areas for ground nesting species
- Pollinator-friendly lawn (with flowering clover, dandelions...)
- Herb garden
- Native milkweed planting for monarchs and bees (where appropriate)
- Invasive/exotic plant species removal for habitat improvement

- Native pollinator-friendly tree planting
- Native pollinator-friendly shrub border/hedgerow planting
- Rain garden/bioswale
- Roadside/rights of way planting
- School garden



Red Oak Rain Garden- Maddy Craft (ROrg Committee member)



Red Oak Rain Garden- Maddy Craft (ROrg Committee member)

## Education & Outreach

*Please describe pollinator conservation events or outreach activities in your community in 2024, indicating whether your committee hosted them or not.*

The events held in our community related to Bee Campus were all held by committee members. Most of our events

benefit pollinators through actions of maintaining the gardens and hives for bees and many more pollinators.

*How many pollinator-related events or outreach activities did you host or help with in 2024 (in total)?*

44

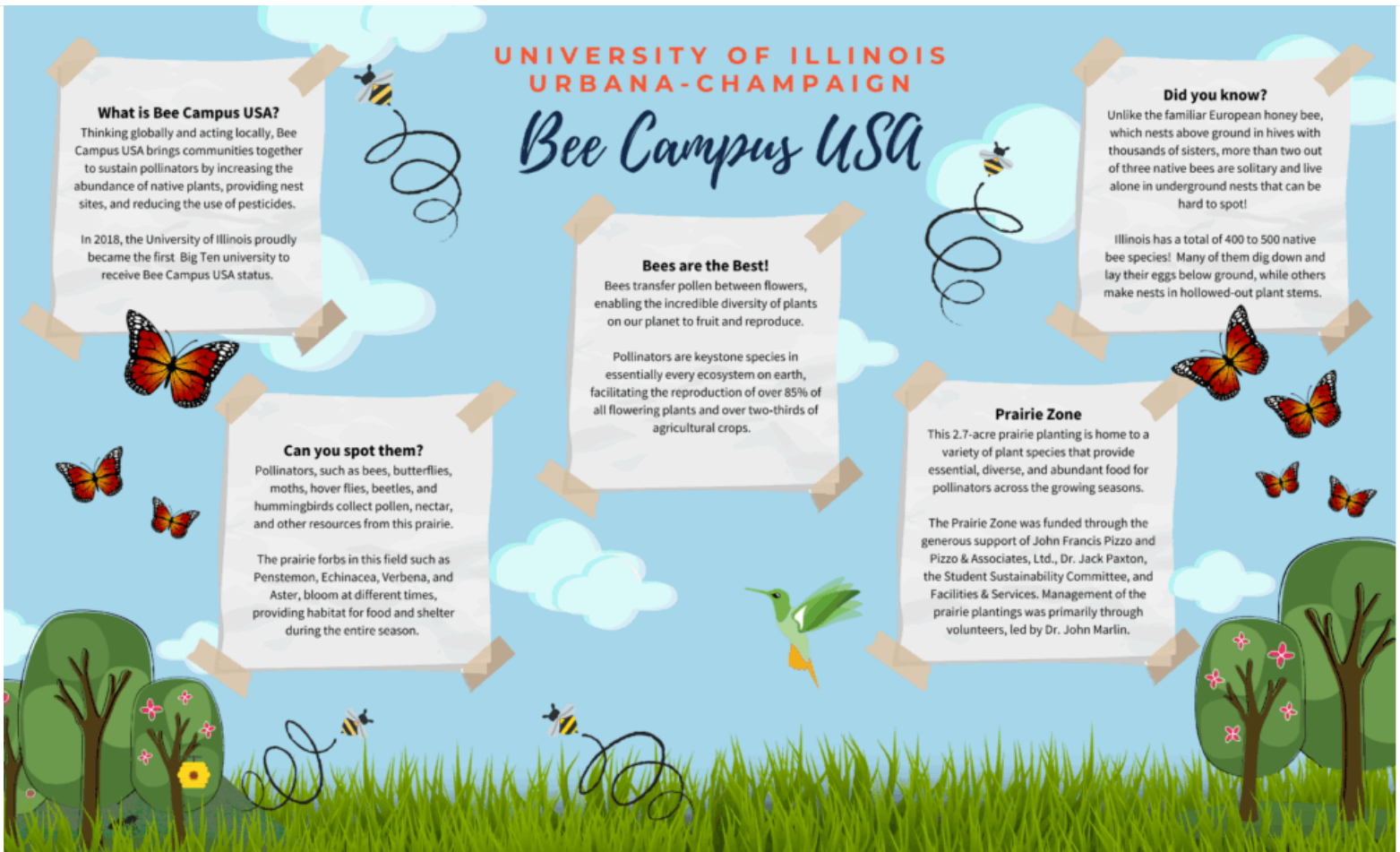
*How many people attended those events (in total)?*

800

*Number of permanent interpretive/educational/Bee Campus USA signs installed to date?*

4





University of Illinois Urbana Champaign - Facilities and Services

## Curriculum, Continuing Education, & Service Learning

*Please describe the curriculum your campus engaged in 2024, indicating whether it was part of a for-credit course or continuing education.*

The courses in our curriculum that we have on campus are for credit and for continuing education. The classes that we offer are Integrative biology and entomology; these courses dive into how insects and other living organisms interact with one another and their surrounding environment.

*How many of your for-credit courses included pollinator-related information in 2024?*

1

How many students attended those for-credit courses?

529

How many of your continuing education courses included pollinator-related information in 2024?

2

How many participants attended those continuing education courses?

29

Please describe the service-learning projects your students were engaged in 2024, indicating which, if any, were associated with a course.

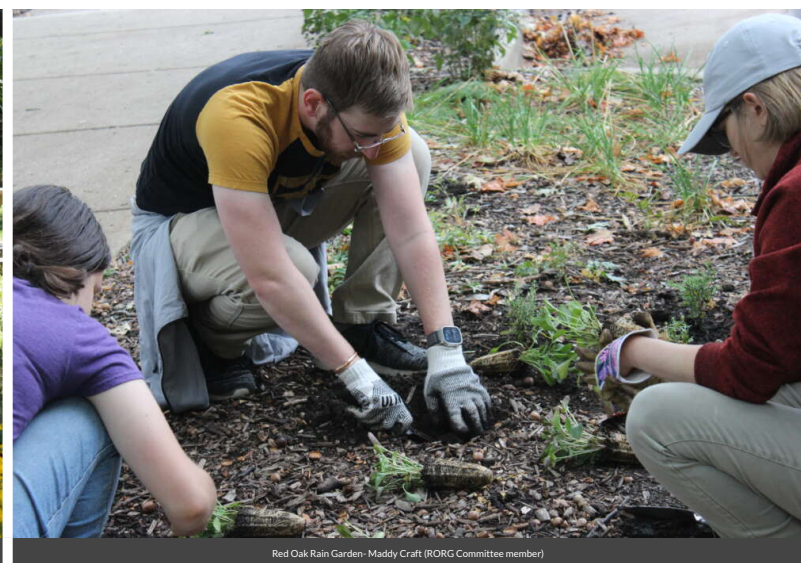
Although the services learning projects on campus were not associated with coursework it played a key role in our rain garden care and mini lessons. These lessons were held by campus experts who were able to provide valuable educational experiences to students and volunteers that shared their time to ensure that these gardens were maintained properly.

How many service-learning projects did your campus host and/or support to enhance pollinator habitat on- and off- campus?

7

How many students participated in service-learning projects in 2024 to enhance pollinator habitat on or off-campus?

61



## Policies & Practices

*Please describe actions taken to make pest management more pollinator-friendly.*

Actions taken to make pest management more pollinator friendly at the university insist on rigorous training and education. Uses of only the safest and lowest toxicity products for effective control of pests and limit the use of herbicides that contain neonicotinoids. The IMP policy was adopted by the college of ACES.

*In your city or campus, are any policy initiatives underway to further protect pollinators, people or waterways from pesticides?*

Our goal at the university is to ensure that we use the least amount of pesticides as possible to ensure that plants, pollinators and people are not affected by the harmful effects of the chemicals used in pesticides. Though we do use pesticides that have chemicals we do try and use better alternatives to the original.

*Did your committee participate in any continuing education on ecologically-based Integrated Pest Management planning?*

Committee members worked with various campus departments to explain IPM and develop multiple IPM programs for this campus. See <https://icap.sustainability.illinois.edu/project/integrated-pest-management-ipm> for information.

*Please check actions you have taken to make pest management practices more pollinator-friendly.*

- Implemented or maintained a written IPM plan
- Only use pesticides as a last resort within the IPM plan
- Avoided use of pesticides in public sites containing designated pollinator habitat or other sensitive features (except when targeted use is deemed the best option for invasive or noxious weed, insect or disease management)
- Implemented non-chemical pest prevention and management methods on city or campus grounds
- Distributed educational materials to residents or students to encourage the reduction or elimination of pesticide use
- Sourced plants for city or campus grounds using “Buying Bee-Safe Plants” methods recommended by Xerces Society. (See <https://xerces.org/publications/fact-sheets/buying-bee-safe-plants>)
- Encouraged developers and private landscapers to source plants using “Buying Bee-Safe Plants” methods recommended by Xerces Society. (See <https://xerces.org/publications/fact-sheets/buying-bee-safe-plants>)

Learn More

**Integrated Pest Management Plan:** [integrated-pest-management-program 2-18-22.pdf](#)

<https://fs.illinois.edu/bees-and-pollinators/>

**Recommended Native Plant List:**

<https://uofi.app.box.com/s/8gzo54tmc1p9xl1o58f8togdkhsn562v/file/468926797550>

**Recommended Native Plant Supplier List:**

<https://icap.sustainability.illinois.edu/project/bee-campus-usa>  
[bee-campus@lists.illinois.edu](mailto:bee-campus@lists.illinois.edu)