

Bee City USA - Ashland

Report on 2024

Pollinator Habitat Creation & Enhancement

Please describe pollinator habitat creation or enhancement projects in your community in 2024, and whether your committee hosted them or not.

Colesville Nursery and the Town of Ashland established five unique habitats across five local parks: Carter Park, Pufferbelly Park, S. Taylor Street Park, the Town Shop, and Railside Park. Each was designed to support native plant biodiversity and benefit pollinators, especially bees. These habitats feature a carefully selected variety of native species known to attract and sustain pollinating insects throughout the growing season. Among the plants introduced are *Amsonia hubrichtii*, *Viburnum dentatum*, *Rhus* species, *Ilex glabra*, *Helianthus salicifolius*, *Phlox carolina*, *Liatris spicata*, *Solidago speciosa*, *Penstemon digitalis*, *Aster ericoides*, *Monarda fistulosa*, *Coreopsis verticillata*, *Anemone virginiana*, and *Polystichum acrostichoides*. The gardens are in places that the community can see the plants and enjoy but also support the park ecosystems. The Committee was involved in selecting the locations, planting, and maintenance. Further expansion is predicted for this year, with signage being developed and installed at the gardens.

How many habitat projects did you help to create or enhance in 2024?

5

How many people (staff, volunteers, students, partners, etc.) helped with those projects?

8

How many projects benefit monarchs, milkweed, or nectar plantings?

5

How many total square feet of habitat were created or enhanced?

180

Please check all that describe the habitats your affiliate helped to create or enhance in 2024 with pollinator benefit in mind.

- Flower garden



Education & Outreach

Please describe pollinator conservation events or outreach activities in your community in 2024, indicating whether your committee hosted them or not.

The Committee partnered with the local library to host an engaging educational event focused on creating pollinator-friendly gardens. The program featured a comprehensive slideshow presentation that highlighted recommended native plant species, detailed the steps taken to establish pollinator gardens throughout the town, and offered practical tips for starting and maintaining a garden at home. The Town's Parks and Recreation Manager was a guest speaker and shared insights into the Town's collaboration with Colesville Nursery, a local business that generously donated native plants, prepared garden beds, handled the planting process, and continues to provide ongoing maintenance. The Town also shared how it became an official Bee City USA affiliate and described how the Public Works Department works alongside Colesville Nursery to support pollinator-friendly practices in public spaces. A local representative from the Bee City USA program was present at the event, offering educational materials and speaking with attendees about the importance of pollinator conservation. In addition, Colesville Nursery contributed to the Farmer's Market educational series by hosting a similar event, where they answered questions, provided expert advice, and sold native plants to the community. The collaborative efforts reflect a strong commitment to promoting biodiversity and supporting pollinator health throughout the town. Colesville also attended a brewery sponsored pollinator event.

How many pollinator-related events or outreach activities did you host or help with in 2024 (in total)?

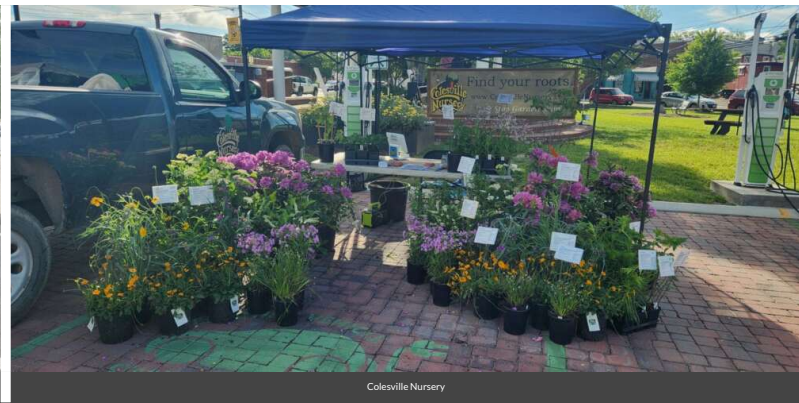
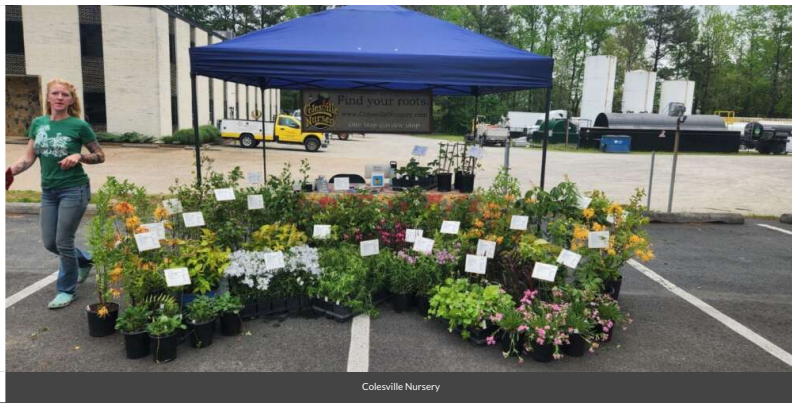
3

How many people attended those events (in total)?

200

How many Bee City USA logo street signs have you installed to date (in total)?

1



Policies & Practices

Please describe actions taken to make pest management more pollinator-friendly.

Public works, who maintains our parks and landscaping, are using a variety of pest management practices that are pollinator friendly. They hardly use pesticides, and when they do, they only apply treatments labeled as safe for bees.

Are efforts underway in your community to further reduce pesticide use in residential or business areas? This may include neighborhood-led efforts, outreach to landscapers, etc. If so, please describe.

Not yet.

In your city or campus, are any policy initiatives underway to further protect pollinators, people or waterways from pesticides?

Not yet.

Did your committee participate in any continuing education on ecologically-based Integrated Pest Management planning?

We did not participate in continuing education seminars that dealt with IPM planning specifically, but Colesville Nursery does work closely with vendors that educate us on ecologically based IPM planning such as the latest findings on the use of beneficial insects in our growing facility or the timing of treatment such as not to harm the pollinators as they emerge.

Any lessons learned you would like to share?

Have a larger committee and contingency plan for if people on your committee leave!

Committee Photo



Learn More

Integrated Pest Management Plan: [bee city IPM proposal.docx](#)

Recommended Native Plant List: [bee city native list.docx](#)

Recommended Native Plant Supplier List: [12 - NATIVE RT ONLY.pdf](#)

<https://www.ashlandva.gov/192/Parks-Recreation>
elaine@colesvillennursery.com

<https://www.facebook.com/TownofAshland>

