

Bee City USA - Council Bluffs

Report on 2024



Pollinator Habitat Creation & Enhancement

Please describe pollinator habitat creation or enhancement projects in your community in 2024, and whether your committee hosted them or not.

There were 5 new pollinator habitats created by the City of Council Bluffs on City owned property that was previously managed turf grass. These habitats are a combination of pollinator seed mixes and plugs as well as trees and shrubs. These projects were supported by City employees who also reside on the committee, but were not lead specifically by the committee as a whole. Committee members did support additional plantings of plugs in established native planting areas. Non-committee hosted plantings also happened at 3 elementary schools and at a City park.

How many habitat projects did you help to create or enhance in 2024?

9

How many people (staff, volunteers, students, partners, etc.) helped with those projects?

126

How many projects benefit monarchs, milkweed, or nectar plantings?

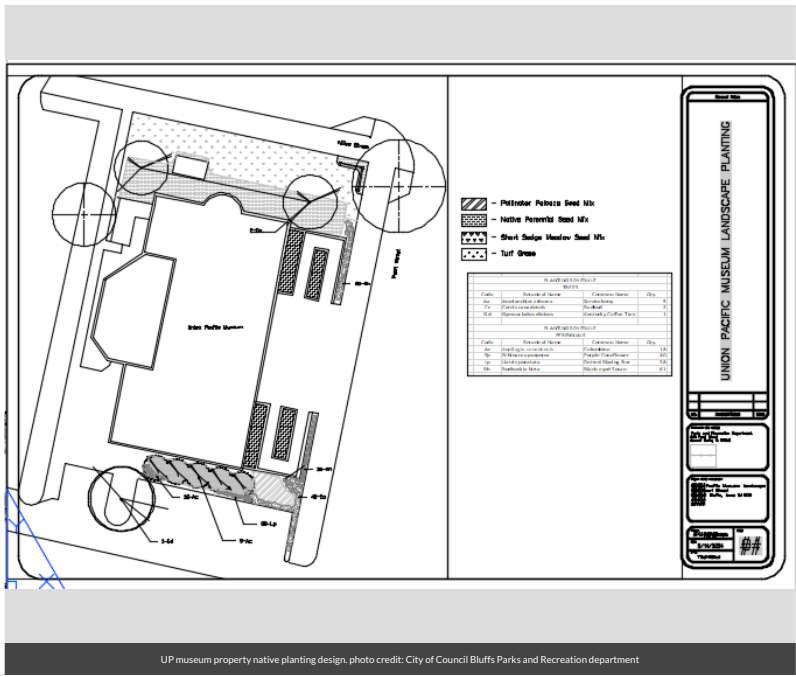
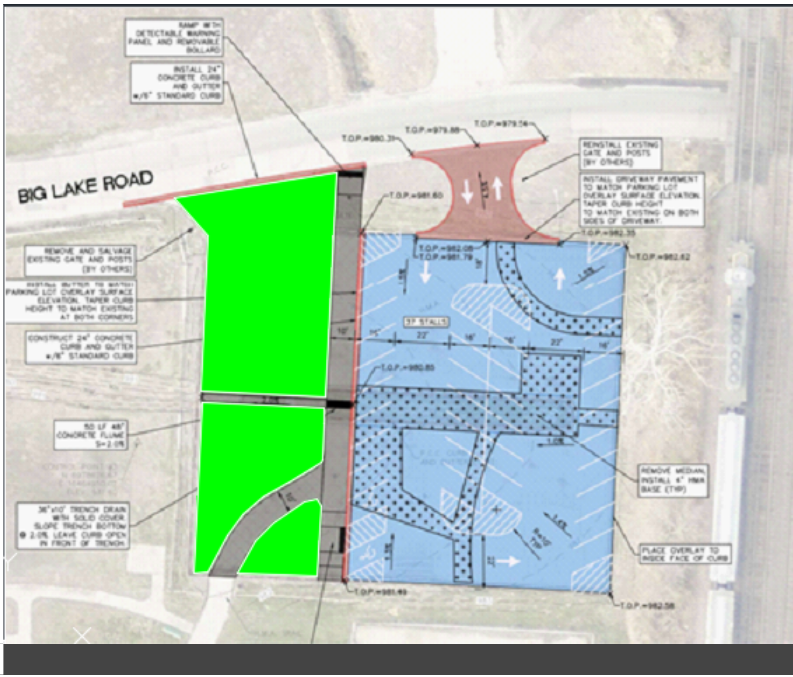
10

How many total square feet of habitat were created or enhanced?

84227

Please check all that describe the habitats your affiliate helped to create or enhance in 2024 with pollinator benefit in mind.

- Native pollinator-friendly tree planting
- Native pollinator-friendly shrub border/hedgerow planting
- Roadside/rights of way planting
- School garden



UP museum property native planting design, photo credit: City of Council Bluffs Parks and Recreation department

Education & Outreach

Please describe pollinator conservation events or outreach activities in your community in 2024, indicating whether your committee hosted them or not.

The majority of events were hosted by Bee City committee members. Events included a large resource fair, dozens of storytimes in schools, and multiple session class teaching adult how to garden with native plants. Additionally representatives from the committee walked in the community parade. Print information was shared through City of Council Bluffs communication related to solid waste billing and new lamp post banners were hung along major streets proudly displaying the City as a Bee City. Non-committee programs includes garden plantings, plant giveaways, native plant sales, and seed collecting instruction. A conference was also held by the Master Gardeners on native planting.

How many pollinator-related events or outreach activities did you host or help with in 2024 (in total)?

10

How many people attended those events (in total)?

1200

How many Bee City USA logo street signs have you installed to date (in total)?

4



Display at local resource fair. Photo credit: Council Bluffs Public Library



Gardening class resource fair. Photo credit: Council Bluffs Public Library



Session of adult gardening class on native plant gardening. Photo credit: Council Bluffs Public Library



Bee City sign on native garden outside public library. Photo Credit: City of Council Bluffs

Policies & Practices

Please describe actions taken to make pest management more pollinator-friendly.

The Parks and Recreation Department continues to follow its Integrated Management Plan that focuses on reducing the application of chemicals. And we do not spray any pesticides in native habitat areas.

Are efforts underway in your community to further reduce pesticide use in residential or business areas? This may include neighborhood-led efforts, outreach to landscapers, etc. If so, please describe.

We have established connections with the Chamber of Commerce to identify their members who may benefit from information, but no additional efforts have been taken.

In your city or campus, are any policy initiatives underway to further protect pollinators, people or waterways from pesticides?

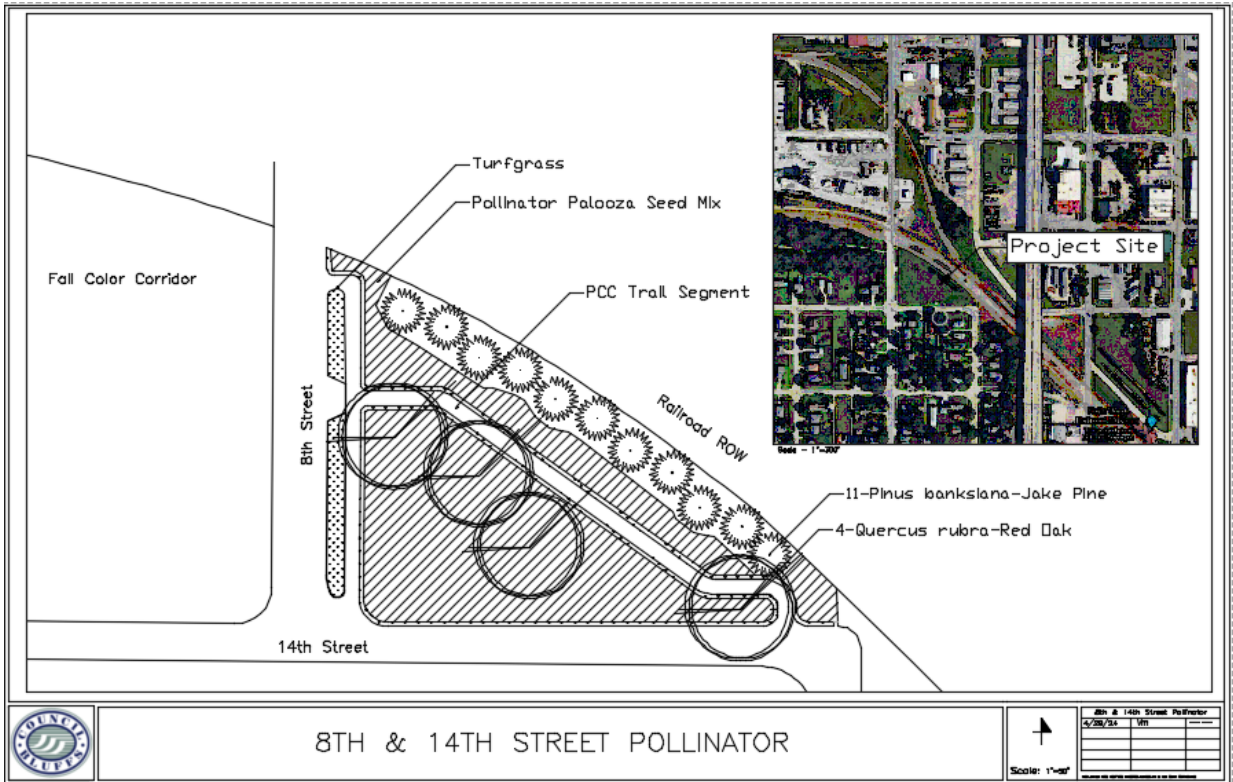
No specific policies have been initiated to date.

Did your committee participate in any continuing education on ecologically-based Integrated Pest Management planning?

Not this year.

Please check actions you have taken to make pest management practices more pollinator-friendly.

- **Implemented or maintained a written IPM plan**
- **Only use pesticides as a last resort within the IPM plan**
- **Avoided use of pesticides in public sites containing designated pollinator habitat or other sensitive features (except when targeted use is deemed the best option for invasive or noxious weed, insect or disease management)**
- **Reduced the total area of city or campus-managed lands to which pesticides are applied**

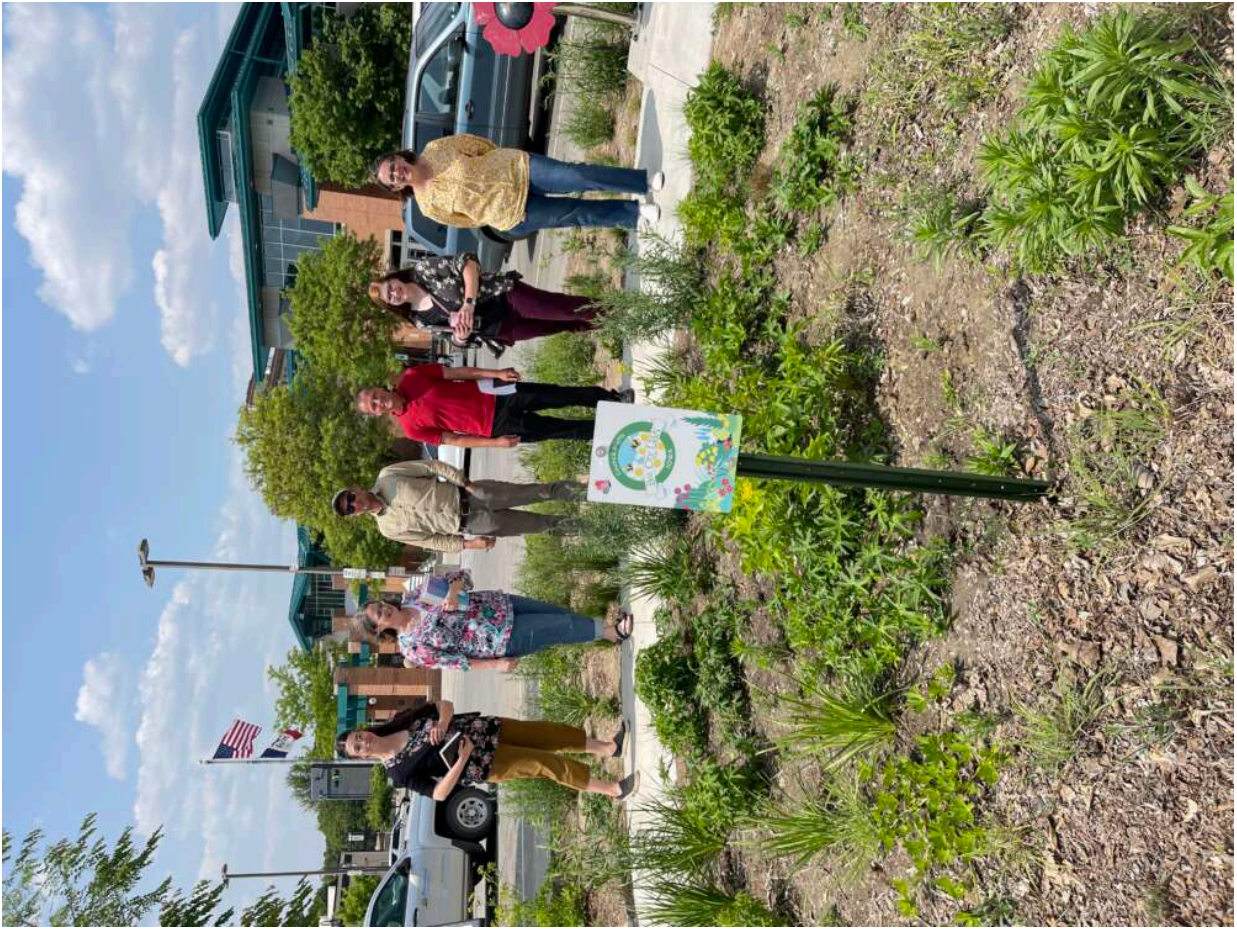


Design planned for a site to convert current turf grass to native plantings. Illustrates the internal policy of incorporating native plantings to replace current turf grass. photo credit: City of Council Bluffs Parks and Recreation department

Any lessons learned you would like to share?

The biggest lesson is that this is slow consistent work. Not everything is spectacular, but we thinking doubling our native plantings is something to be proud of.

Committee Photo



Committee members at a native planting outside of the library. photo credit: City of Council Bluffs

Learn More

Integrated Pest Management Plan: [IPM Plan.pdf](#)

Recommended Native Plant List: [Plant List UPDATED 2023.pdf](#)

Recommended Native Plant Supplier List: [where_to_get_native_plants_amp_seeds_19846.pdf](#)

<https://www.councilbluffs-ia.gov/2511/Bee-City>
pollinators@councilbluffslibrary.org