

Bee City USA - Gillette

Report on 2024



Pollinator Habitat Creation & Enhancement

Please describe pollinator habitat creation or enhancement projects in your community in 2024, and whether your committee hosted them or not.

Adopt a Planter Pollinator Friendly Flowers. Approximately 1000 flats. Planting pollinator-friendly plants in Hwy. medians. Several flower beds with pollinator-friendly plants. Monarch Way Stations. (City of Gillette hosted)

How many habitat projects did you help to create or enhance in 2024?

1

How many people (staff, volunteers, students, partners, etc.) helped with those projects?

30

How many projects benefit monarchs, milkweed, or nectar plantings?

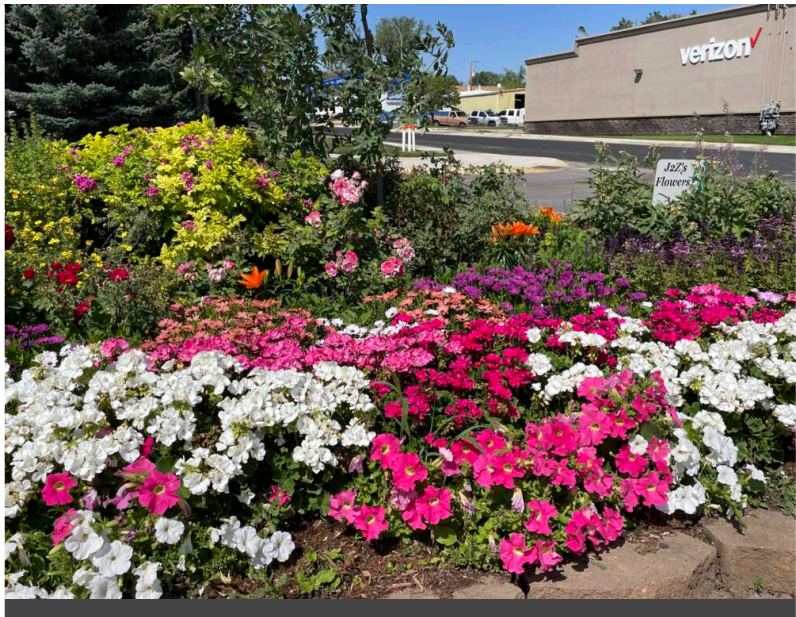
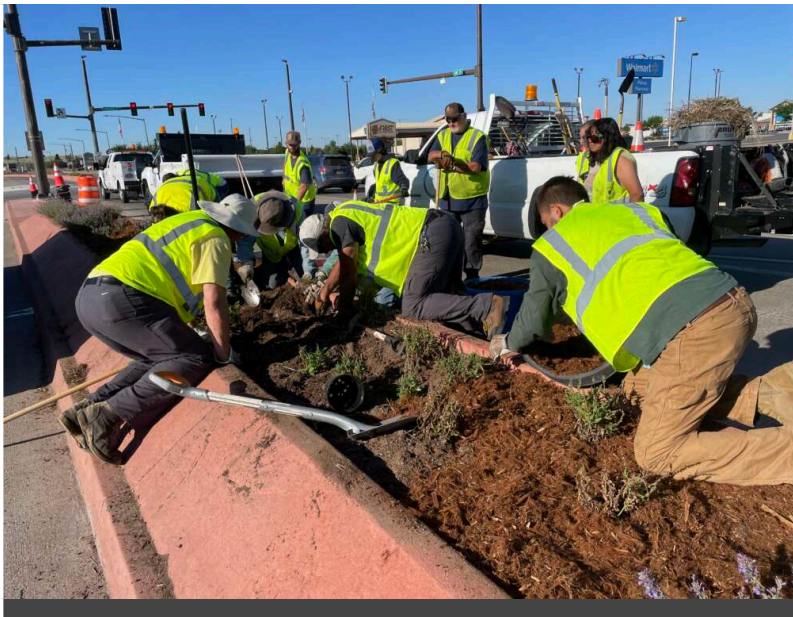
2

How many total square feet of habitat were created or enhanced?

4901

Please check all that describe the habitats your affiliate helped to create or enhance in 2024 with pollinator benefit in mind.

- Flower garden
- Roadside/rights of way planting



Education & Outreach

Please describe pollinator conservation events or outreach activities in your community in 2024, indicating whether your committee hosted them or not.

Master Gardeners of Campbell held pollinator counts on: June 12 July 12 August 14 September 11

How many pollinator-related events or outreach activities did you host or help with in 2024 (in total)?

1

How many people attended those events (in total)?

75

How many Bee City USA logo street signs have you installed to date (in total)?

4

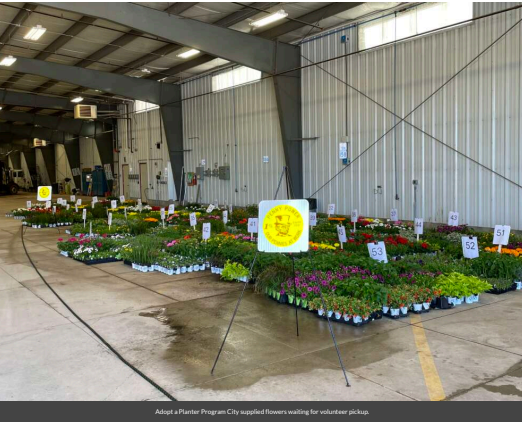
Campbell County Master Gardener 2024 Schedule

Held at George Amos Memorial Building, Cottonwood Room unless otherwise noted.

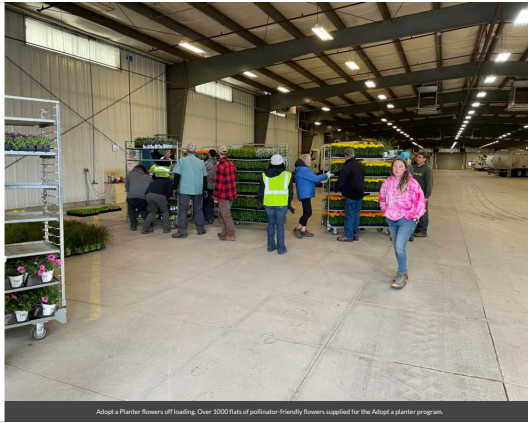
- January 24th - Plant Cutting Swap and Houseplant Propagation 6pm
- February 24th - Flower Arrangements 1pm
- April 15th - Native Plants 6pm
- April 23rd - Container Gardening, Wright Library 6pm
- April 24th - Container Gardening 6pm
- May 2nd - Tree Sale, Campbell County Ice Arena, 4-J Road
- June - Gardening for Kids, Shelter #4 Cam-Plex Park TBA
- July 13th - Garden Walk
- August - Camporee (no event planned)
- September 17th - Regrowing Foods From the Kitchen, Wright Library 6pm
- September 24th - Regrowing Foods From the Kitchen 6pm
- October - Pumpkin Succulent TBA
- November - Seed Saving TBA
- December - Holiday Centerpiece TBA



Scan the QR code to get more information on events or call 307.682.7281



Adopt a Planter Program: City supplied flowers waiting for volunteer pickup.



Adopt a Planter flowers offloading. Over 5000 flats of pollinator-friendly flowers supplied for the Adopt a planter program.

Campbell County Master Gardener 2024 Events



Since 2016

The City has 4 signs near our Welcome to Gillette signs.



Policies & Practices

Please describe actions taken to make pest management more pollinator-friendly.

We strictly use pesticides only when necessary. We try to inject or systemically use chemicals to lower any residual effects. We have not sprayed or injected pesticides for several years. We do spray for noxious weeds only.

In your city or campus, are any policy initiatives underway to further protect pollinators, people or waterways from pesticides?

We follow strict guidelines for using any chemicals near waterways.

City of Gillette Parks Division Integrated Pest Management in the Landscape

The City of Gillette Parks Division provides a strategic approach of Integrated Pest Management to effectively manage insect pests in the landscape by using economically and environmentally sustainable practices. Actions are taken only when necessary. As a rule, the City of Gillette Parks Division rarely sprays for pests but focuses more on efforts to control noxious weeds.

The goal of the City of Gillette Parks Division is not to eliminate insect pests, but rather to strengthen and stabilize the landscape (ecosystem) so that conditions are more favorable for plants than they are for pests. This is achieved by employing a combination of practices to prevent or avoid anticipated pest problems rather than treating them once they occur through efforts of biological control. Treatment decisions are based on information derived from site-specific scouting and monitoring practices. Action can be taken in a timely manner to prevent significant problems by using the most environmentally-friendly and cost-effective combination of cultural or mechanical, biological and when justified, chemical methods available.

It is of highest regard the City of Gillette Parks Division provide a safe and healthy environment for beneficial insects (i.e. butterflies and bees) as well as beneficial organisms.

Goals:

- Protect human health and the surrounding environment by employing a range of preventative strategies and using least-toxic products for pest control and eradication.
- Inspect and monitor pest populations to enhance control strategies.
- Minimize the quantity and toxicity of chemicals used for pest management.
- Minimize environmental impacts by using species-specific pesticides and targeting application areas carefully.
- Establish clear criteria for acceptable circumstances in which using a pesticide other than a least-toxic pesticide is necessary; toxic pesticides shall only be used when there is a threat to public health and safety, or to prevent economic or environmental damage, and only after other alternatives have been implemented and are shown to be ineffective.

Integrated Pest Management procedures which the City of Gillette Parks Division regularly applies in the landscape:

1. Pest Prevention:
 - The use of disease and insect resistant plants shall be utilized.
 - Monitor plants early to catch problems early.
 - Encourage birds in controlling insects. (Pruning trees and shrubs to promote wildlife habitat.)
 - Proper identification of pests before a treatment is recommended.
2. Attract Beneficial Insects When Possible:
 - Promote plant material that is pollinator friendly. (i.e. Adopt a Planter, New Landscaping)
 - Promote pollinator habitat. (i.e. groundcovers, grasses, rocks)
3. Natural Enemy Population Introduction:
 - When applicable introduce natural enemies. (i.e. Test plot @ ECSC for Toadflax)
4. Application of Lowest Possible Toxicity as Last Resort:
 - When spraying is necessary, the City of Gillette Parks Division will select a narrow spectrum product whenever possible. This may include naturally derived products such as pyrethrum and rotenone as well as chemical products.
 - Avoid over-use of pesticides to avoid pest resistance.
 - Use of low toxicity insecticide with the least possibility of harming insect eating birds or other creatures.

- Treat only affected areas.
- When applicable, choose products that break down quickly.

Diagnose, Monitor, Assess, Act

- Identify pest(s) and/or symptom(s)
- Monitor density/incidence/severity
- Assess pest biology/life history in relation to plant development/ production
- Target "windows of opportunity"
- Consider pest management options/ timings
- Follow-up assessment

When chemical control is the last available source of pest control, method of control will be chosen with the least amount of toxicity and environmental impact including only spraying only affected areas of outbreak. Particularly, with a type of control which can be applied systemically rather than applied externally.

Integrated Pest Management

- Avoid planting trees attractive to borers, such as birch, poplar, aspen, ash, and willow
- Maintain tree health - stressed trees are more prone to attack (drought, heat, winter injury).
- Water and fertilize trees.
- Windows of opportunity for maximum benefit of adult emergence.
- Good lawn care practices (Fertilize, Mow Aerate, Irrigate, & De-thatch)
- Select more tolerant turf species and varieties.
- Careful application of herbicide drift and runoff when using chemicals.

INTEGRATED PEST MANAGEMENT PROCEDURES RECENTLY APPLIED:

- Soft scale on Pine Trees @ Dalbey Park (High pressure water to "wash off" soft scale).
- Manually removing Toadflax in Energy Capital Sports Complex tree line.
- **BENEFICIAL INSECT:** Toadflax weevil on test plot of Energy Capital Sports Complex.
- The use of wasp traps at City Park.
- Systemic treatment of Oyster Shell Scale @ Dalbey Park.
- Spot spray weed infestations.
- Avoid spraying if pollinators are present.
- Mosquito growth regulators in standing water.
- Promote the growth of the common Milkweed as an important habitat and food source for the Monarch butterfly.

Committee Photo



City of Gillette Parks Board

Learn More

Integrated Pest Management Plan: [Integrated Pest Management in the Landscape.docx](#)

Recommended Native Plant List: [17-052_01_XercesSoc_PollinatorPlants_Northern-Plains_web-3page.pdf](#)
https://xerces.org/pollinator-conservation/pollinator-friendly-plant-lists?field_state_target_id=103

Recommended Native Plant Supplier List:

<http://gillettewy.gov>

janie@gillettewy.gov