

Bee City USA - Media Borough

Report on 2024



Pollinator Habitat Creation & Enhancement

Please describe pollinator habitat creation or enhancement projects in your community in 2024, and whether your committee hosted them or not.

Borough "bump-out gardens" were planted with trees and pollinator plants. These were maintained by Bee City volunteers and Borough residents.

How many habitat projects did you help to create or enhance in 2024?

2

How many people (staff, volunteers, students, partners, etc.) helped with those projects?

30

How many projects benefit monarchs, milkweed, or nectar plantings?

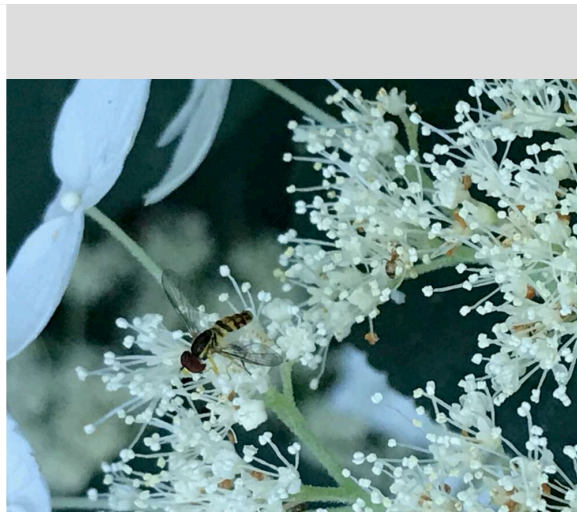
2

How many total square feet of habitat were created or enhanced?

400

Please check all that describe the habitats your affiliate helped to create or enhance in 2024 with pollinator benefit in mind.

- Flower garden
- Natural area with tree snags and stumps, and bare areas for ground nesting species
- Invasive/exotic plant species removal for habitat improvement
- Native pollinator-friendly tree planting
- Roadside/rights of way planting



Education & Outreach

Please describe pollinator conservation events or outreach activities in your community in 2024, indicating whether your committee hosted them or not.

"Breakfast with Butterflies" educational talks, Program with Elementary students. Garden walk and talk. Children's pollinator friendly talk during adult talks. Speaker at Delaware Sustainability Conference.

How many pollinator-related events or outreach activities did you host or help with in 2024 (in total)?

2

How many people attended those events (in total)?

300



Matching the Boragh Bee City Pollinator Garden with a warm cover of leaves for winter.



Volunteers staging for the October, 2024 Halloween Parade.



Snack and Education Table for Breakfast With Butterflies at the Boragh Bee City pollinator garden.



Policies & Practices

Please describe actions taken to make pest management more pollinator-friendly.

Media Borough sponsored a Bee City event using Beyond Pesticide door hangers, which volunteers hung on every door in the Borough. Educational programs took place where mosquito dunks were handed out. Mosquito "Buckets Of Doom" which included dunks, straw bucket and instructions, were sold to support Bee City activities.

Are efforts underway in your community to further reduce pesticide use in residential or business areas? This may include neighborhood-led efforts, outreach to landscapers, etc. If so, please describe.

Pennsylvania State laws preempt local municipality laws, so we are unable to pass pesticide regulations. However, residents can report chemical drift onto their properties. If residue is found, the agency fines the offending company. We have found this to be a moderate deterrent.

In your city or campus, are any policy initiatives underway to further protect pollinators, people or waterways from pesticides?

Media Borough has passed a partial ban on using gasoline leaf blowers, restricting the hours they can be used.

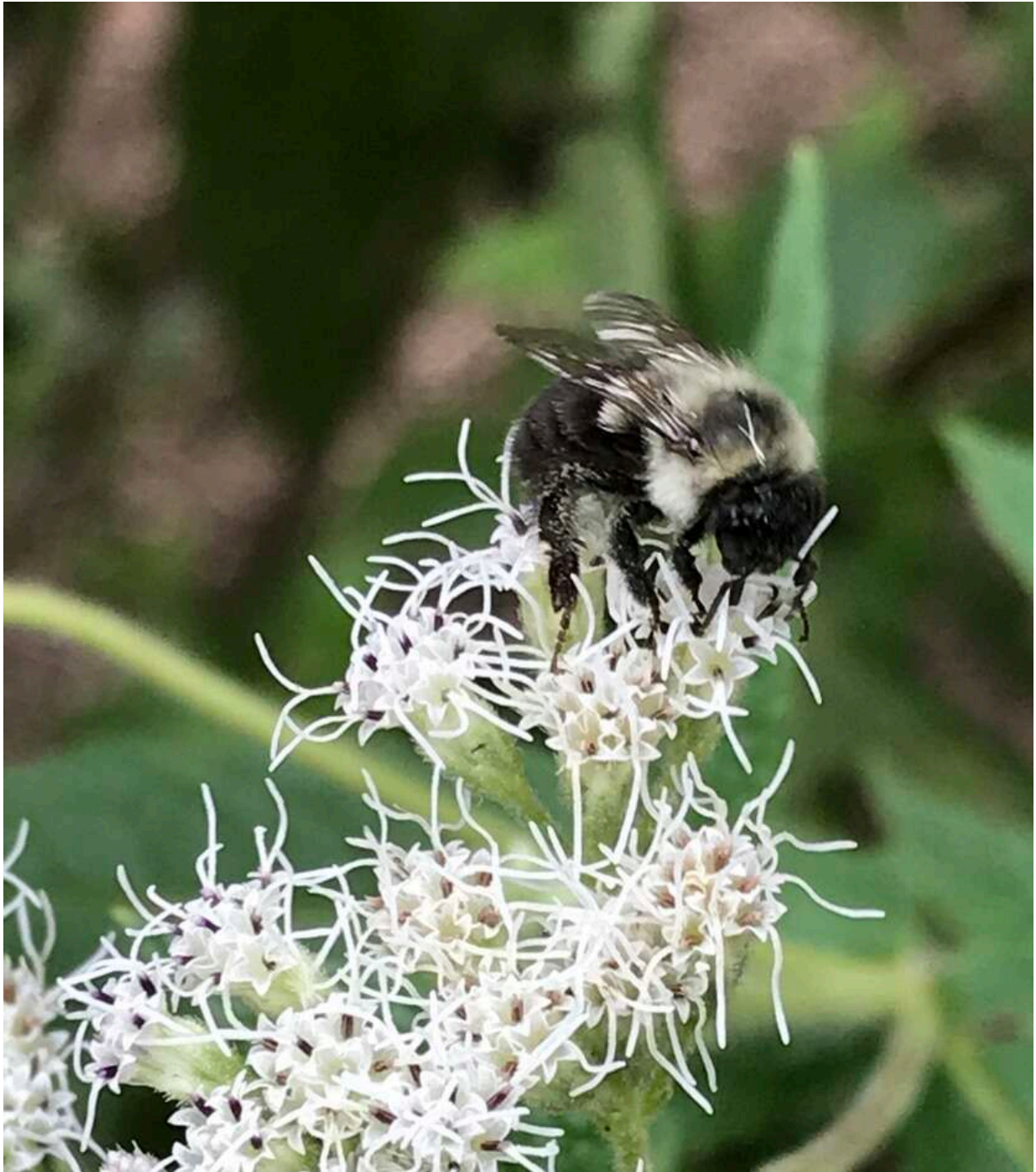
However, there has been considerable push back on a total ban

Did your committee participate in any continuing education on ecologically-based Integrated Pest Management planning?

We distributed 800 mosquito dunks and sold Mosquito Buckets of Doom. We continue to educate people using fans and personal mosquito/insect repellents.

Please check actions you have taken to make pest management practices more pollinator-friendly.

- Implemented or maintained a written IPM plan
- Only use pesticides as a last resort within the IPM plan
- Avoided use of pesticides in public sites containing designated pollinator habitat or other sensitive features (except when targeted use is deemed the best option for invasive or noxious weed, insect or disease management)
- Eliminated pesticide uses that are solely to maintain aesthetics on city or campus grounds
- Dropped pesticide use altogether on city or campus grounds
- Distributed educational materials to residents or students to encourage the reduction or elimination of pesticide use



Any lessons learned you would like to share?

A friendly approach in educating the public works better than being headon.

Committee Photo



Back, left to right, Suzie, Sari, Astrid, Walt, Kelsey, Carol, Seated, Julie, Linda

Learn More

Integrated Pest Management Plan:

Recommended Native Plant List:

Recommended Native Plant Supplier List:

<http://www.mediaborough.com>

lc341@comcast.net

<https://www.facebook.com/groups/770389751092265>