

# Bee City USA - Snowshoe

Report on 2024



## Pollinator Habitat Creation & Enhancement

*Please describe pollinator habitat creation or enhancement projects in your community in 2024, and whether your committee hosted them or not.*

**Habitat creation on an abandoned strip mine roughly 3 acres – hosted by our committee – volunteers came to help remove rocks and invasive species. We then planted our wildflower mix. We lobbied departments to start using pollinator friendly seed mixes when reclaiming work sites.**

*How many habitat projects did you help to create or enhance in 2024?*

2

*How many people (staff, volunteers, students, partners, etc.) helped with those projects?*

30

*How many projects benefit monarchs, milkweed, or nectar plantings?*

2

*How many total square feet of habitat were created or enhanced?*

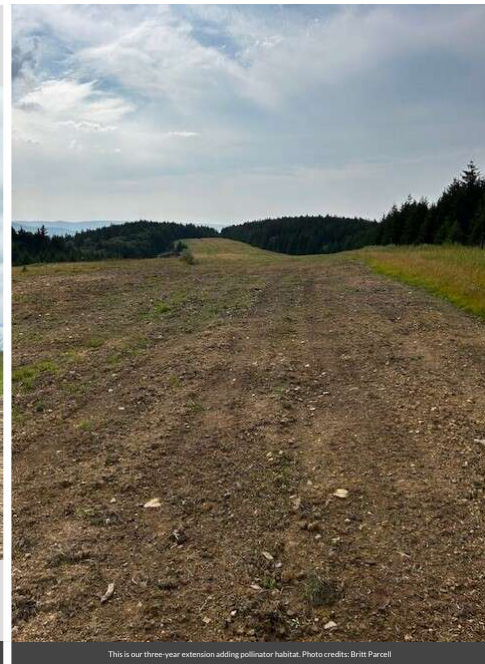
264000

*Please check all that describe the habitats your affiliate helped to create or enhance in 2024 with pollinator benefit in mind.*

- Flower garden
- Natural area with tree snags and stumps, and bare areas for ground nesting species
- Meadow
- Pollinator-friendly lawn (with flowering clover, dandelions...)
- Native milkweed planting for monarchs and bees (where appropriate)
- Roadside/rights of way planting



Volunteers gather to remove rocks. Photo credits: Hannah Persic



This is our three-year extension adding pollinator habitat. Photo credits: Britt Parcell

## Education & Outreach

*Please describe pollinator conservation events or outreach activities in your community in 2024, indicating whether your committee hosted them or not.*

**Bee City USA event in Aug 2024 – hosted by our committee \*Hay rides up to the garden \*Guided yoga in the garden \*Rusty Patched Bumblebee book storytelling time to littles \*Beekeeper educator comes to event Multiple Nature's Mountain Classroom events – hosted by our committee – taught about pollinators, hiked to bee city, and made seed wildflower bombs to take home and plant. Last month taught kindergarten about Bee Keeping and the importance of pollinators in the food chain.**

*How many pollinator-related events or outreach activities did you host or help with in 2024 (in total)?*

3

*How many people attended those events (in total)?*

500

*How many Bee City USA logo street signs have you installed to date (in total)?*

2



Hikers stopping to enjoy the pollinator garden. Photo credits: Hannah Peric



Nature's Mountain Classroom Beekeeping event. Photo credits: Tracy Valach



Guests enjoying a hayride and the Rusty Patched Bee Song on the way up to the pollinator garden during our annual Bee City USA event. Photo credits: Hannah Peric



## Policies & Practices

*Please describe actions taken to make pest management more pollinator-friendly.*

**We adopted a policy of no pesticide/herbicide use on our 10,000-acre property for employees or contractors alike.**

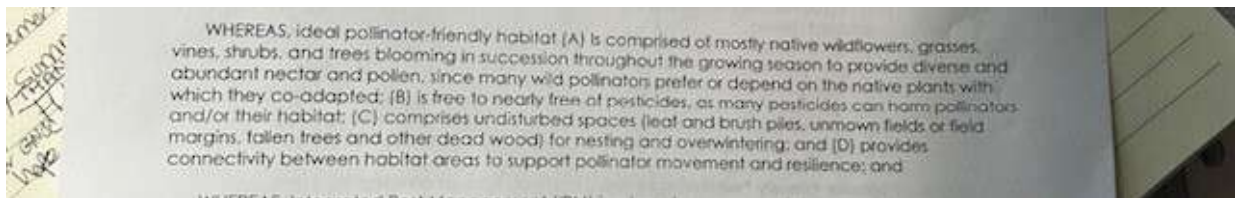
*Are efforts underway in your community to further reduce pesticide use in residential or business areas? This may include neighborhood-led efforts, outreach to landscapers, etc. If so, please describe.*

**We are working on gathering information from the xerces society for invertebrate and conservation to distribute to the community at our next bee event in August.**

*In your city or campus, are any policy initiatives underway to further protect pollinators, people or waterways from pesticides?*

**We adopted a no pesticides/herbicides policy for our property.**

*Did your committee participate in any continuing education on ecologically-based Integrated Pest Management planning?*  
**not this year**



Mission statement of being pesticide free. Photo credits: Britt Parcell

*Any lessons learned you would like to share?*

**hay does not work well for growth. Flowers do better at lower elevations from our experience.**

---

## Committee Photo



Learn More

**Integrated Pest Management Plan:**

**Recommended Native Plant List:**

**Recommended Native Plant Supplier List:**

<https://www.snowshoemtn.com/>  
[hpersic@snowshoemountain.com](mailto:hpersic@snowshoemountain.com)

<https://instagram.com/Snowshoemtn>  
<https://www.facebook.com/SnowshoeMountainResort>